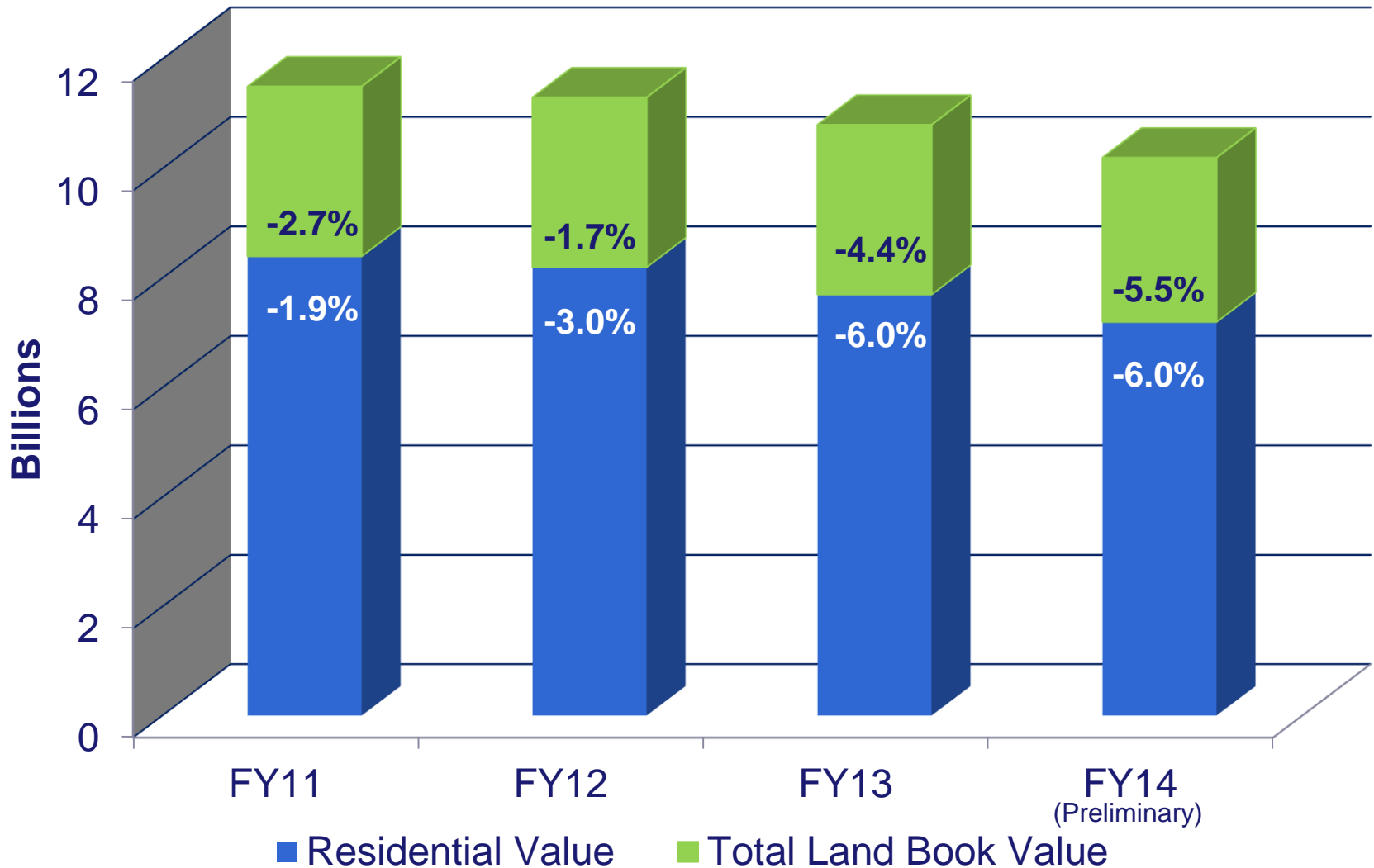
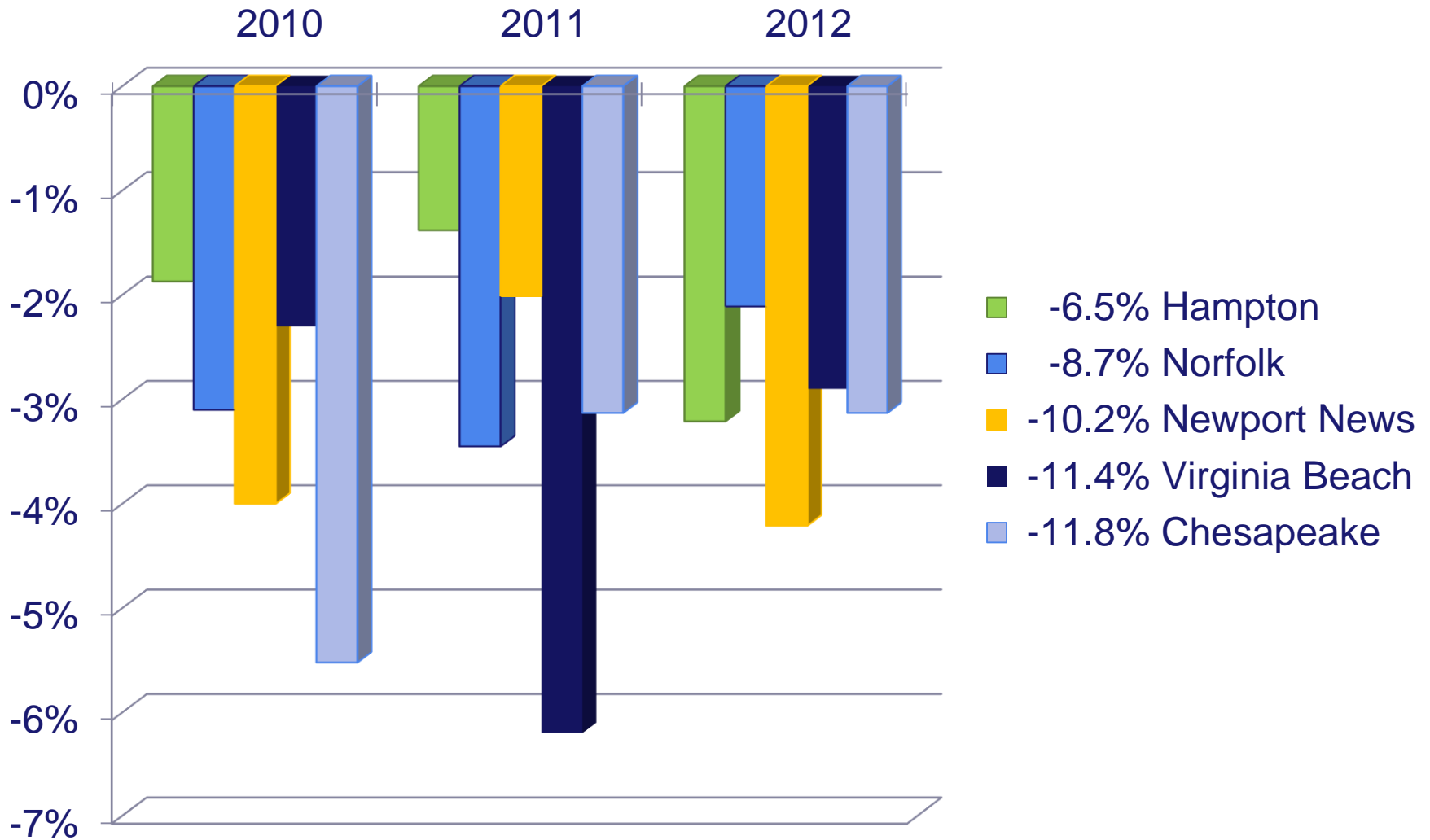


Hampton Real Estate Taxable Value



Real Estate Taxable Value

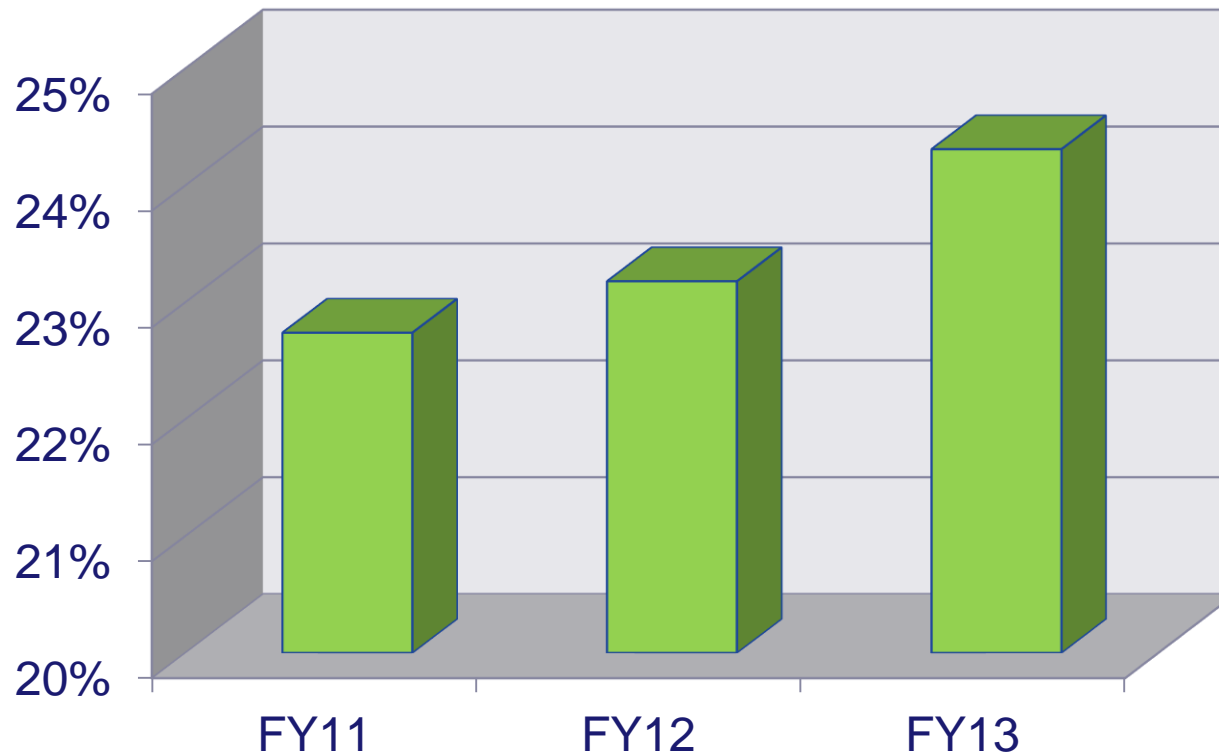


Residential Changes

% Change	FY12 to FY13 Count	% of Total	FY10 to FY13 Count	% of Total
Increase	717	2%	942	2%
No Change	3,557	8%	704	2%
0 to -5	12,888	30%	4,922	12%
-5 to -10	21,307	50%	15,732	37%
< -10	4,409	10%	19,842	47%
	42,878	100%	42,142	100%

Exempt Value

As Percent of Total Land Book Value



Tax Exemption Programs

Elderly & Disabled

FY 2011	\$1.9 Million
FY2012	\$1.9 Million
FY2013 (Preliminary)	\$1.8 Million

Disabled Veterans

FY 2012 (Preliminary)	\$770,900
FY 2013 (Preliminary)	\$766,000