

WASTEWATER OPERATIONS



Hampton
VIRGINIA

Hampton City Council

June 10, 2009

Wastewater Operations Division

PURPOSE

- ◆ Summarize current functions of the Wastewater Operations Division
- ◆ Overview requirements of the Regional Consent Order



Wastewater Operations
Division / 10 June 2009



Regional Consent
Order Overview

AGENDA

SUMMARY OF WASTEWATER OPERATIONS

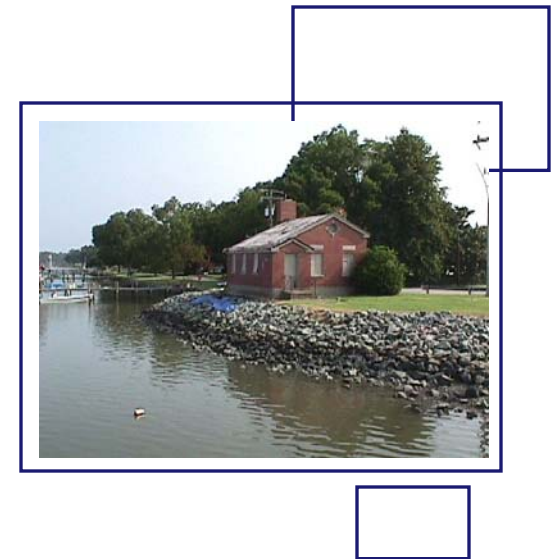
STATUS OF THE REGIONAL CONSENT ORDER

CITY STAFF & CONSULTANTS RECOMMENDATIONS

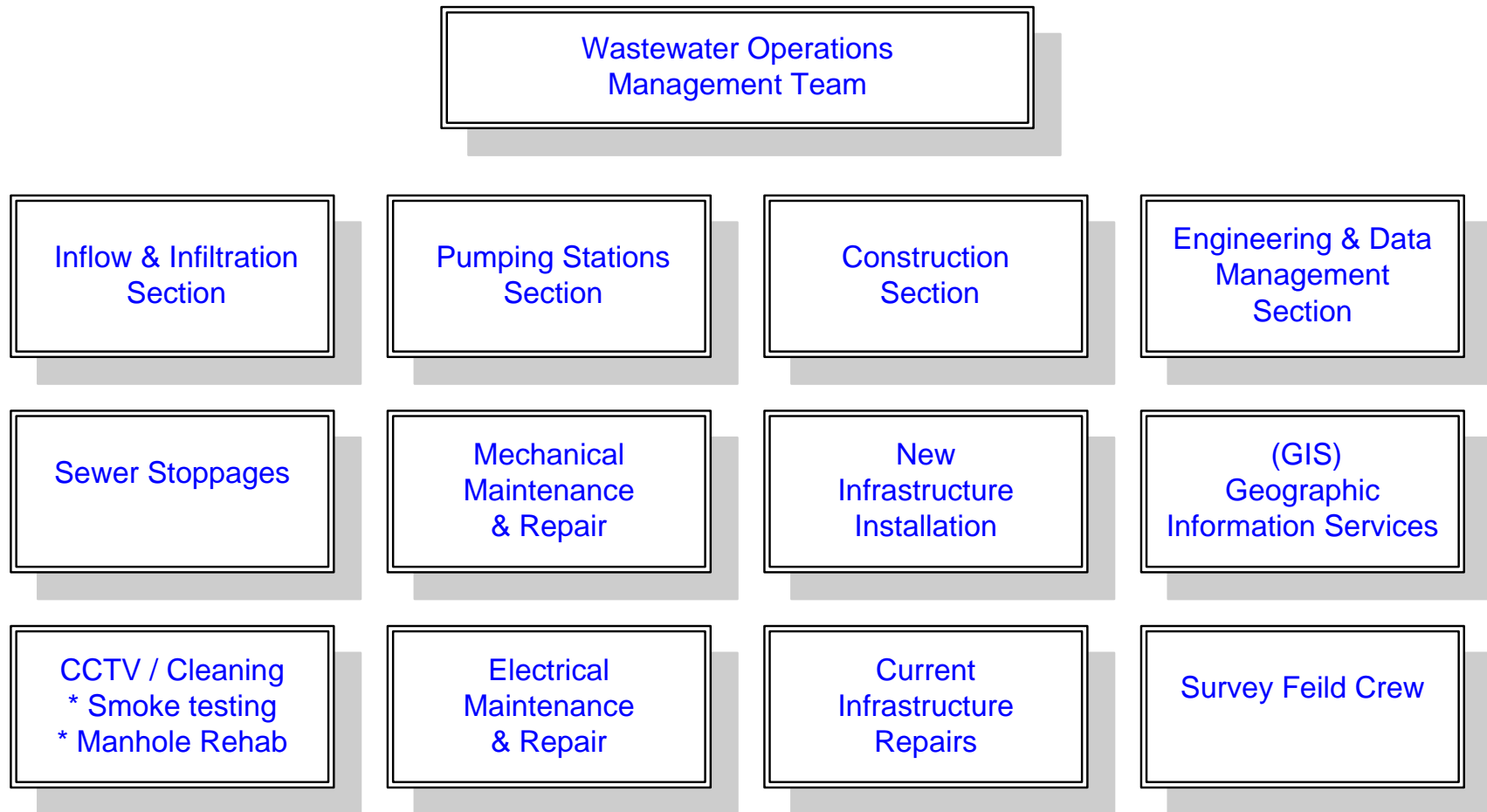
BACKGROUND

Wastewater Operations Division

- ✚ Collects/transport 20 MGD to HRSD
- ✚ 108 Sewage Pump Stations
- ✚ 11,055 Manholes
- ✚ 477 Miles of Sanitary Sewer piping
- ✚ 136 square miles of coverage
- ✚ 46,054 customers



CURRENT STATUS

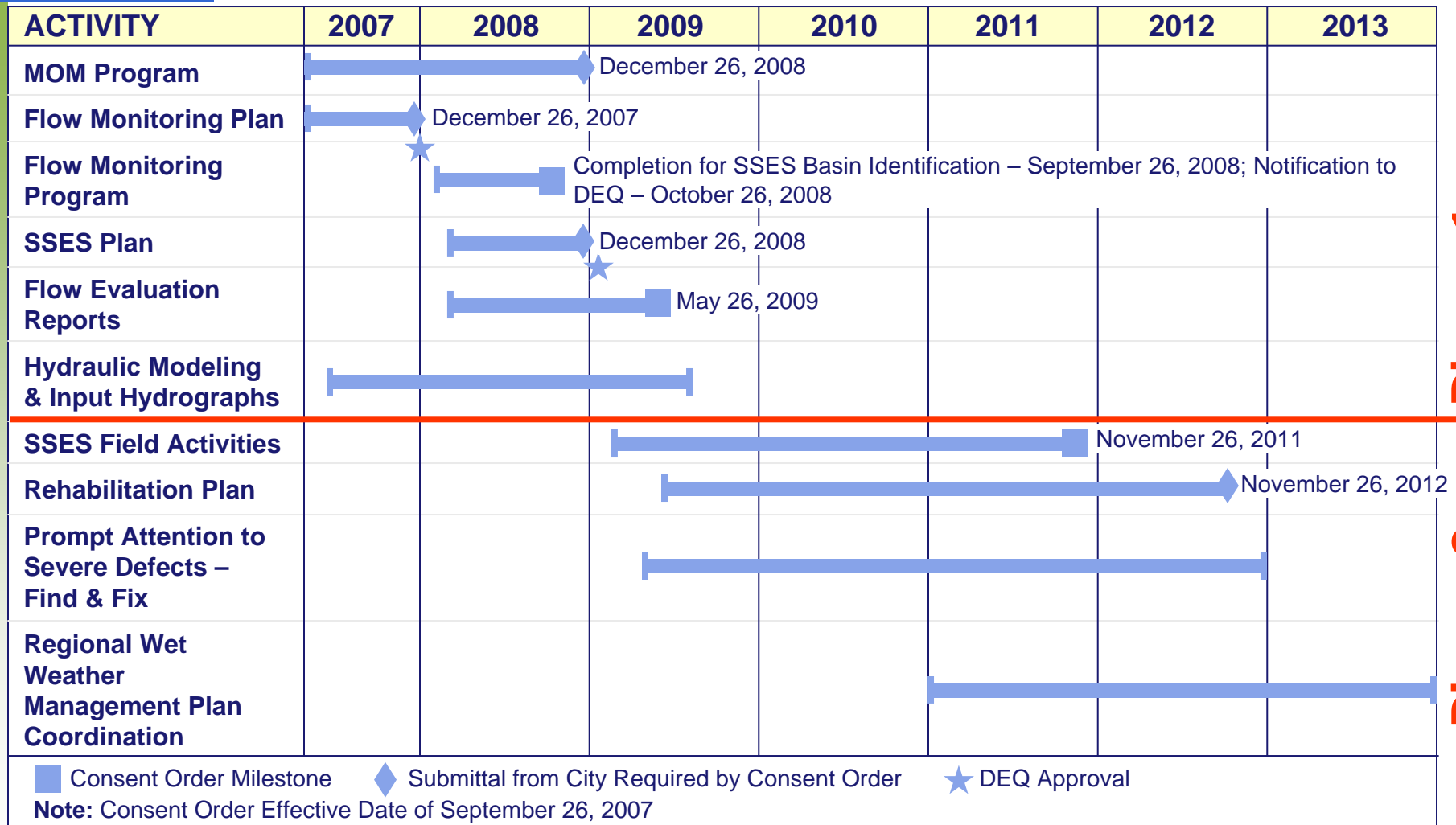


REGIONAL CONSENT ORDER (RCO)

**Approved by DEQ and Hampton Roads
Localities on September 26, 2007**

- ◆ **PURPOSE:** To minimize unpermitted sanitary sewer discharges in the region
- ◆ **PHASE 1** – Data Collection, Evaluation, and Planning
- ◆ **PHASE 2** – Implementation of Long Term Capacity Enhancement and Sewer Rehabilitation Plans

REGIONAL CONSENT ORDER



Phase 1

Phase 2

RCO PHASE 1

- ◆ **FLOW MONITORING AND FLOW EVALUATION REPORT**
Data on the City's existing sewer flow during dry and wet weather periods
- ◆ **MAINTENANCE OPERATIONS AND MANAGEMENT PLAN (MOM)**
Maintenance and Operation Management Best Practices for the Wastewater Division
- ◆ **SEWER SYSTEM EVALUATION STUDY (SSES)**
Prioritization Plan on which sewers to conduct field investigation work for development of a Rehabilitation Plan
- ◆ **HYDRAULIC MODELING**
Sewer System model to determine existing and future capacity

RCO PHASE 2

SSES FIELD ACTIVITIES

Smoke Testing

Manhole Inspections

Pump Station/Force Main Evaluations

Closed Circuit Television Inspection (CCTV)



REHABILITATION PLAN

Results/Recommendations from SSES Field Work

Long Range Capital Improvement Plan

FIND AND FIX

In-house/Contract Labor to make “emergency” repairs

RCO / FUTURE AGENDA ITEMS

PRIVATE PROPERTY LATERAL ABATEMENT PROGRAM TO REDUCE INFLOW AND INFILTRATION ISSUES

- Establish a Private Property Abatement Ordinance
- Implement an effective I&I Program for Private Property
- Private Property / Inflow and Infiltration Education
- Inspection and Enforcement Items



SUMMARY

- ◆ Required work of the Regional Consent Order is on Schedule
- ◆ Wastewater Operations is performing a large portion of the work in house
- ◆ Woolpert, Inc. is providing technical assistance to ensure compliance with the Regional Consent Order

