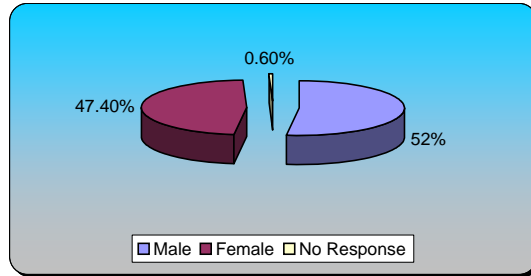


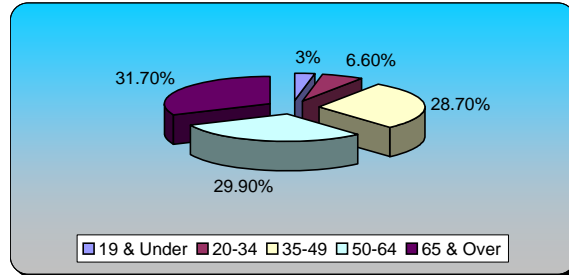
**5 Public Forums of Budget Week  
Graphical Results by Question**

Session Name: Merged\_BudgetWeekFY11-5 Forums  
Created: 3/1/2010 12:27 PM

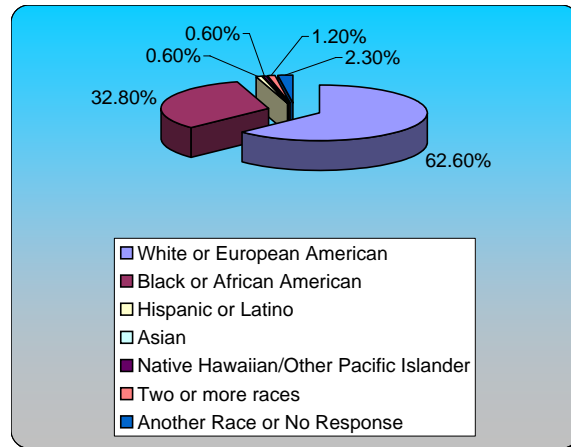
1.) Gender (multiple choice)	Responses	
Male	90	52.02%
Female	82	47.40%
No Response	1	0.58%
<b>Totals</b>	<b>173</b>	<b>100%</b>



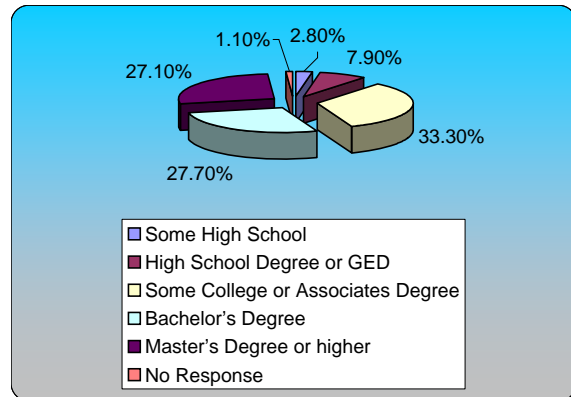
2.) Age (multiple choice)	Responses	
19 & Under	5	2.99%
20-34	11	6.59%
35-49	48	28.74%
50-64	50	29.94%
65 & Over	53	31.74%
<b>Totals</b>	<b>167</b>	<b>100%</b>



3.) Race (multiple choice)	Responses	
White or European American	109	62.64%
Black or African American	57	32.76%
Hispanic or Latino	1	0.57%
Asian	0	0%
Native Hawaiian/Other Pacific Islander	1	0.57%
Two or more races	2	1.15%
Another Race or No Response	4	2.30%
<b>Totals</b>	<b>174</b>	<b>100%</b>

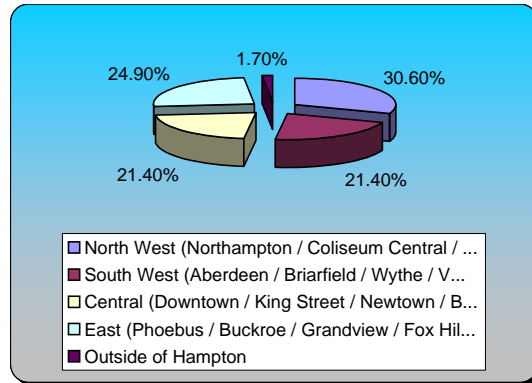


4.) Education Level (multiple choice)	Responses	
Some High School	5	2.82%
High School Degree or GED	14	7.91%
Some College or Associates Degree	59	33.33%
Bachelor's Degree	49	27.68%
Master's Degree or higher	48	27.12%
No Response	2	1.13%
<b>Totals</b>	<b>177</b>	<b>100%</b>



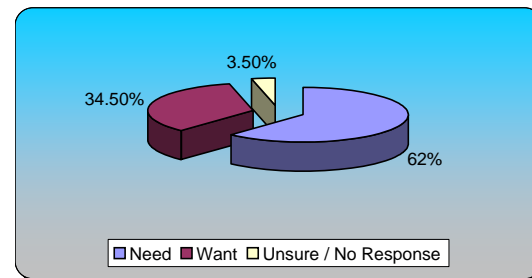
**5.) Neighborhood Area (Where you Live, Work, Invest, or Visit most) (multiple choice)**

	Responses	
North West (Northampton / Coliseum Central / ...	53	30.64%
South West (Aberdeen / Briarfield / Wythe / V...	37	21.39%
Central (Downtown / King Street / Newtown / B...	37	21.39%
East (Phoebus / Buckroe / Grandview / Fox Hil...	43	24.86%
Outside of Hampton	3	1.73%
<b>Totals</b>	<b>173</b>	<b>100%</b>



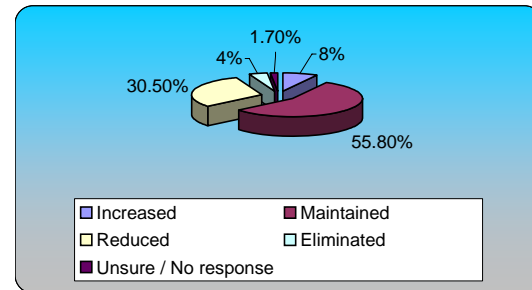
**6.) Community & Neighborhood Centers (multiple choice)**

	Responses	
Need	106	61.99%
Want	59	34.50%
Unsure / No Response	6	3.51%
<b>Totals</b>	<b>171</b>	<b>100%</b>



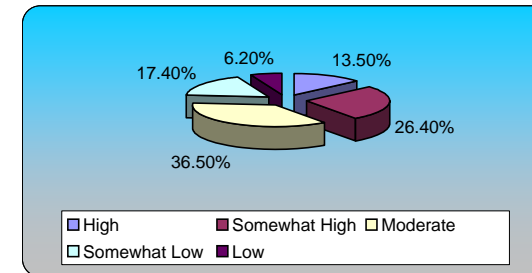
**7.) Community & Neighborhood Centers (multiple choice)**

	Responses	
Increased	14	8.05%
Maintained	97	55.75%
Reduced	53	30.46%
Eliminated	7	4.02%
Unsure / No response	3	1.72%
<b>Totals</b>	<b>174</b>	<b>100%</b>



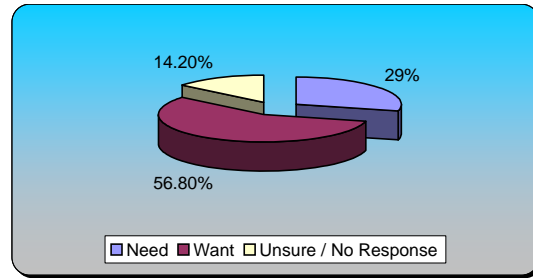
**8.) Community & Neighborhood Centers (multiple choice)**

	Responses	
High	24	13.48%
Somewhat High	47	26.40%
Moderate	65	36.52%
Somewhat Low	31	17.42%
Low	11	6.18%
<b>Totals</b>	<b>178</b>	<b>100%</b>



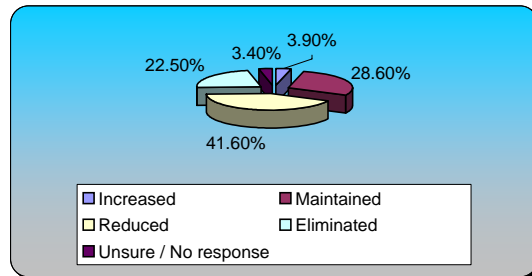
**9.) Community Outreach on Diversity (multiple choice)**

	Responses	
Need	53	28.96%
Want	104	56.83%
Unsure / No Response	26	14.21%
<b>Totals</b>	<b>183</b>	<b>100%</b>



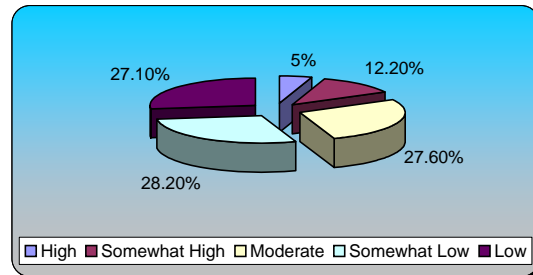
**10.) Community Outreach on Diversity (multiple choice)**

	Responses	
Increased	7	3.93%
Maintained	51	28.65%
Reduced	74	41.57%
Eliminated	40	22.47%
Unsure / No response	6	3.37%
<b>Totals</b>	<b>178</b>	<b>100%</b>



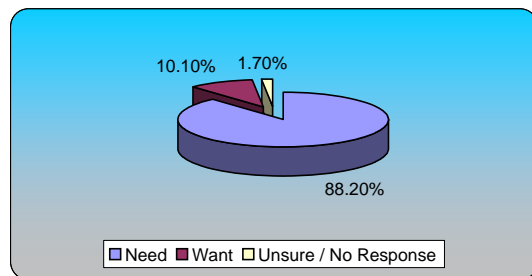
**11.) Community Outreach on Diversity (multiple choice)**

	Responses	
High	9	4.97%
Somewhat High	22	12.15%
Moderate	50	27.62%
Somewhat Low	51	28.18%
Low	49	27.07%
<b>Totals</b>	<b>181</b>	<b>100%</b>



**12.) Public Libraries (multiple choice)**

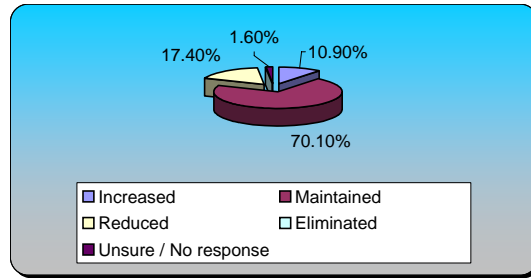
	Responses	
Need	157	88.20%
Want	18	10.11%
Unsure / No Response	3	1.69%
<b>Totals</b>	<b>178</b>	<b>100%</b>



**13.) Public Libraries (multiple choice)**

**Responses**

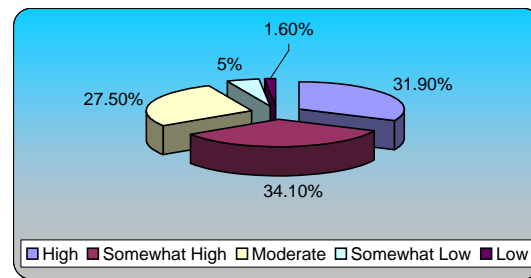
Increased	20	10.87%
Maintained	129	70.11%
Reduced	32	17.39%
Eliminated	0	0%
Unsure / No response	3	1.63%
<b>Totals</b>	<b>184</b>	<b>100%</b>



**14.) Public Libraries (multiple choice)**

**Responses**

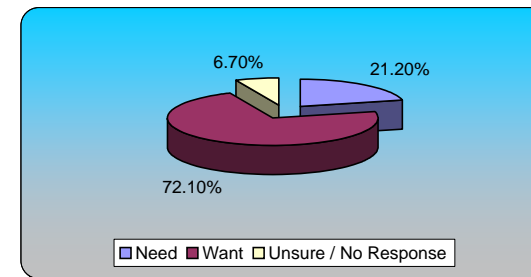
High	58	31.87%
Somewhat High	62	34.07%
Moderate	50	27.47%
Somewhat Low	9	4.95%
Low	3	1.65%
<b>Totals</b>	<b>182</b>	<b>100%</b>



**15.) Hampton History Museum (multiple choice)**

**Responses**

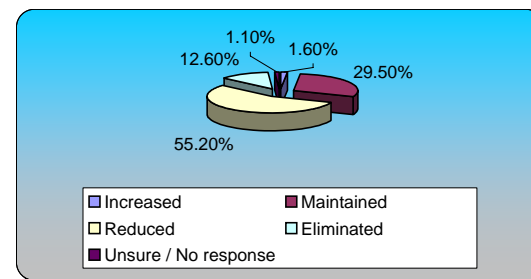
Need	38	21.23%
Want	129	72.07%
Unsure / No Response	12	6.70%
<b>Totals</b>	<b>179</b>	<b>100%</b>



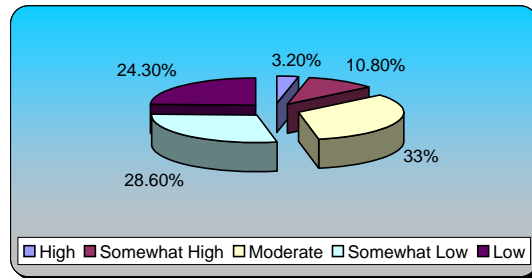
**16.) Hampton History Museum (multiple choice)**

**Responses**

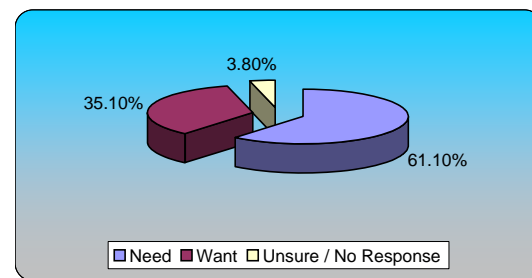
Increased	3	1.64%
Maintained	54	29.51%
Reduced	101	55.19%
Eliminated	23	12.57%
Unsure / No response	2	1.09%
<b>Totals</b>	<b>183</b>	<b>100%</b>



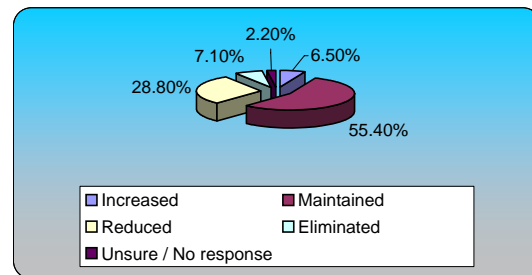
<b>17.) Hampton History Museum (multiple choice)</b>		<b>Responses</b>	
High	6	3.24%	
Somewhat High	20	10.81%	
Moderate	61	32.97%	
Somewhat Low	53	28.65%	
Low	45	24.32%	
<b>Totals</b>	<b>185</b>	<b>100%</b>	



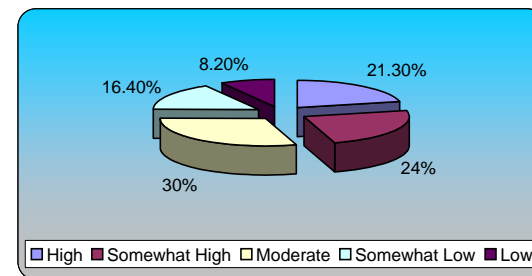
<b>18.) Youth Sports Programs (multiple choice)</b>		<b>Responses</b>	
Need	113	61.08%	
Want	65	35.14%	
Unsure / No Response	7	3.78%	
<b>Totals</b>	<b>185</b>	<b>100%</b>	



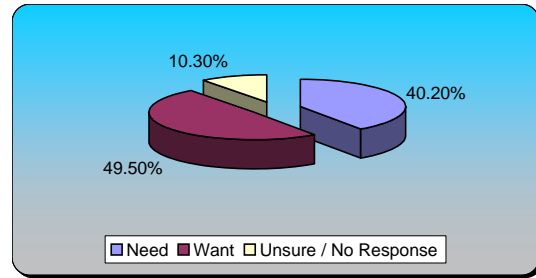
<b>19.) Youth Sports Programs (multiple choice)</b>		<b>Responses</b>	
Increased	12	6.52%	
Maintained	102	55.43%	
Reduced	53	28.80%	
Eliminated	13	7.07%	
Unsure / No response	4	2.17%	
<b>Totals</b>	<b>184</b>	<b>100%</b>	



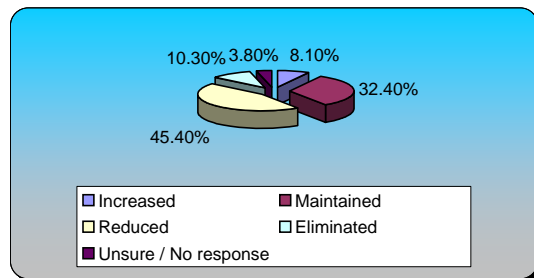
<b>20.) Youth Sports Programs (multiple choice)</b>		<b>Responses</b>	
High	39	21.31%	
Somewhat High	44	24.04%	
Moderate	55	30.05%	
Somewhat Low	30	16.39%	
Low	15	8.20%	
<b>Totals</b>	<b>183</b>	<b>100%</b>	



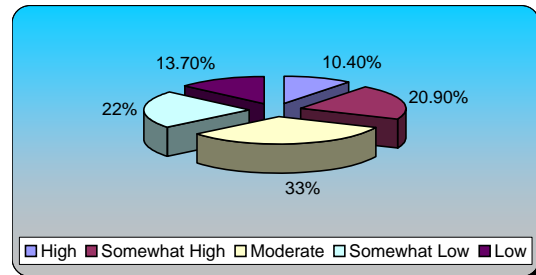
<u>21.) Master Plan Implementation (multiple choice)</u>	<u>Responses</u>	
Need	74	40.22%
Want	91	49.46%
Unsure / No Response	19	10.33%
<b>Totals</b>	<b>184</b>	<b>100%</b>



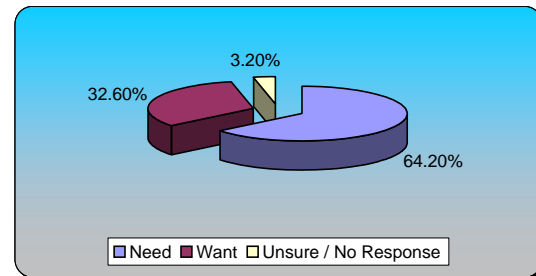
<u>22.) Master Plan Implementation (multiple choice)</u>	<u>Responses</u>	
Increased	15	8.11%
Maintained	60	32.43%
Reduced	84	45.41%
Eliminated	19	10.27%
Unsure / No response	7	3.78%
<b>Totals</b>	<b>185</b>	<b>100%</b>



<u>23.) Master Plan Implementation (multiple choice)</u>	<u>Responses</u>	
High	19	10.44%
Somewhat High	38	20.88%
Moderate	60	32.97%
Somewhat Low	40	21.98%
Low	25	13.74%
<b>Totals</b>	<b>182</b>	<b>100%</b>

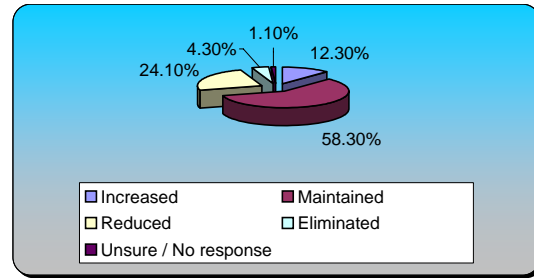


<u>24.) Attract Tourists &amp; Conventions (multiple choice)</u>	<u>Responses</u>	
Need	120	64.17%
Want	61	32.62%
Unsure / No Response	6	3.21%
<b>Totals</b>	<b>187</b>	<b>100%</b>



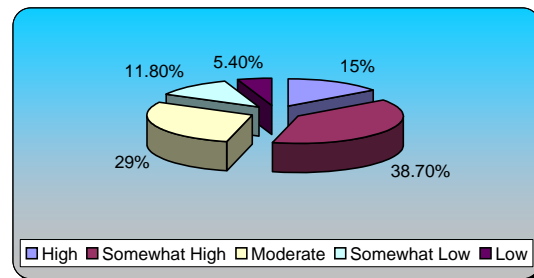
**25.) Attract Tourists & Conventions (multiple choice) Responses**

Increased	23	12.30%
Maintained	109	58.29%
Reduced	45	24.06%
Eliminated	8	4.28%
Unsure / No response	2	1.07%
<b>Totals</b>	<b>187</b>	<b>100%</b>



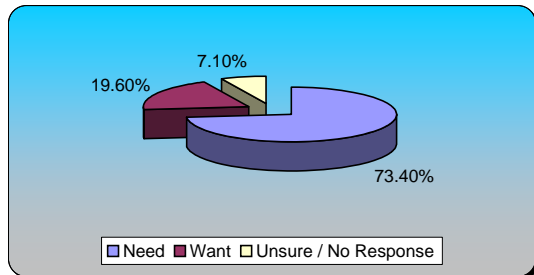
**26.) Attract Tourists & Conventions (multiple choice) Responses**

High	28	15.05%
Somewhat High	72	38.71%
Moderate	54	29.03%
Somewhat Low	22	11.83%
Low	10	5.38%
<b>Totals</b>	<b>186</b>	<b>100%</b>



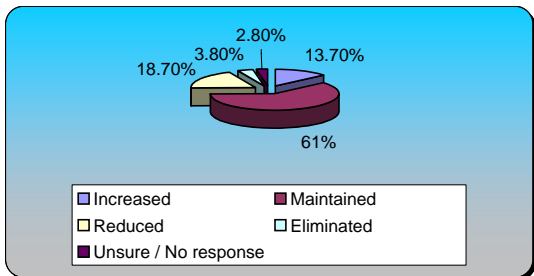
**27.) Retain & Expand Existing Businesses (multiple choice) Responses**

Need	135	73.37%
Want	36	19.57%
Unsure / No Response	13	7.07%
<b>Totals</b>	<b>184</b>	<b>100%</b>



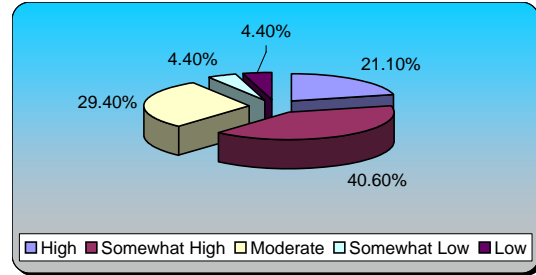
**28.) Retain & Expand Existing Businesses (multiple choice) Responses**

Increased	25	13.74%
Maintained	111	60.99%
Reduced	34	18.68%
Eliminated	7	3.85%
Unsure / No response	5	2.75%
<b>Totals</b>	<b>182</b>	<b>100%</b>



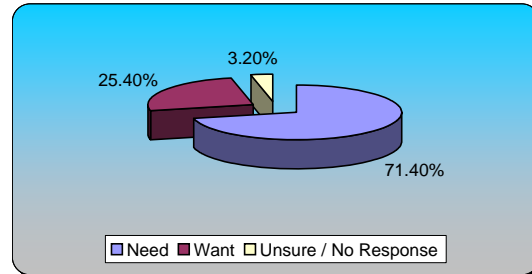
**29.) Retain & Expand Existing Businesses (multiple choice)**

	Responses	
High	38	21.11%
Somewhat High	73	40.56%
Moderate	53	29.44%
Somewhat Low	8	4.44%
Low	8	4.44%
<b>Totals</b>	<b>180</b>	<b>100%</b>



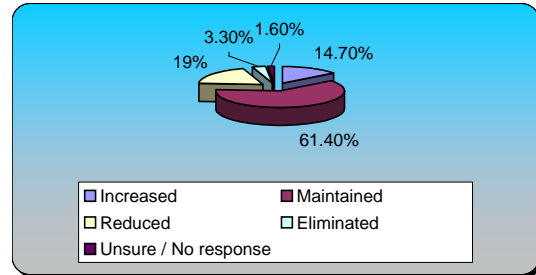
**30.) Attract New Businesses (multiple choice)**

	Responses	
Need	132	71.35%
Want	47	25.41%
Unsure / No Response	6	3.24%
<b>Totals</b>	<b>185</b>	<b>100%</b>



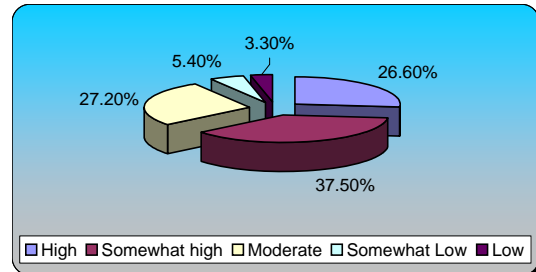
**31.) Attract New Businesses (multiple choice)**

	Responses	
Increased	27	14.67%
Maintained	113	61.41%
Reduced	35	19.02%
Eliminated	6	3.26%
Unsure / No response	3	1.63%
<b>Totals</b>	<b>184</b>	<b>100%</b>



**32.) Attract New Businesses (multiple choice)**

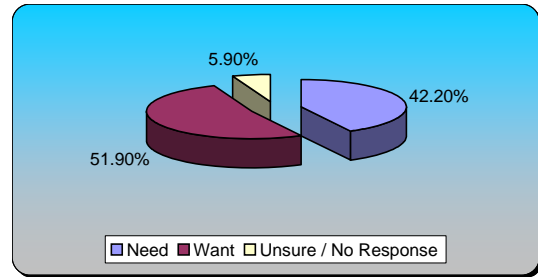
	Responses	
High	49	26.63%
Somewhat high	69	37.50%
Moderate	50	27.17%
Somewhat Low	10	5.43%
Low	6	3.26%
<b>Totals</b>	<b>184</b>	<b>100%</b>





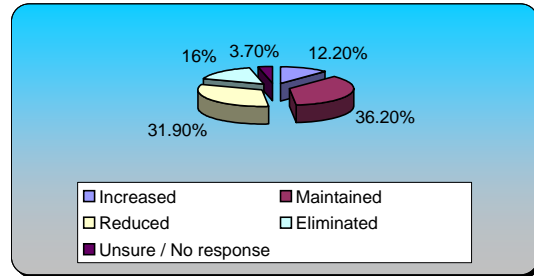
**33.) Encourage Minority Businesses Development (multiple choice)**

	Responses	
Need	78	42.16%
Want	96	51.89%
Unsure / No Response	11	5.95%
<b>Totals</b>	<b>185</b>	<b>100%</b>



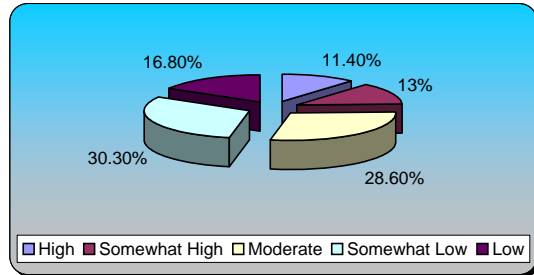
**34.) Encourage Minority Businesses Development (multiple choice)**

	Responses	
Increased	23	12.23%
Maintained	68	36.17%
Reduced	60	31.91%
Eliminated	30	15.96%
Unsure / No response	7	3.72%
<b>Totals</b>	<b>188</b>	<b>100%</b>



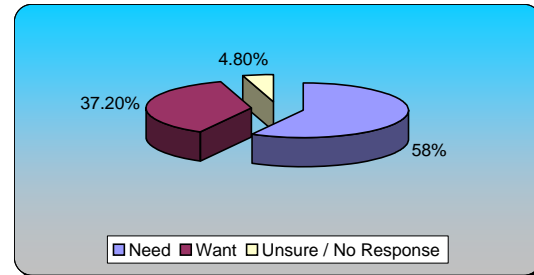
**35.) Encourage Minority Businesses Development (multiple choice)**

	Responses	
High	21	11.35%
Somewhat High	24	12.97%
Moderate	53	28.65%
Somewhat Low	56	30.27%
Low	31	16.76%
<b>Totals</b>	<b>185</b>	<b>100%</b>

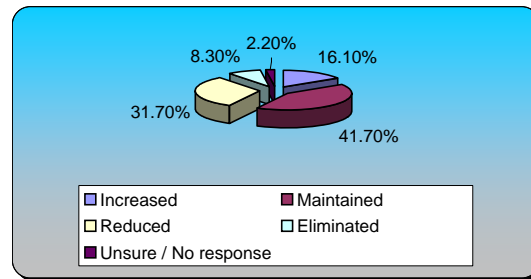


**36.) Remove Blighted Property (multiple choice)**

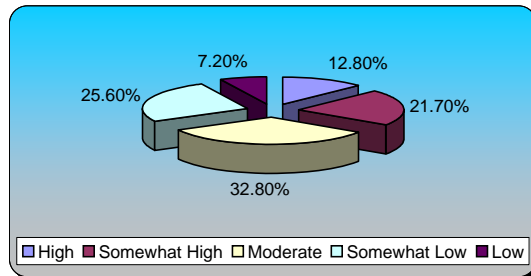
	Responses	
Need	109	57.98%
Want	70	37.23%
Unsure / No Response	9	4.79%
<b>Totals</b>	<b>188</b>	<b>100%</b>



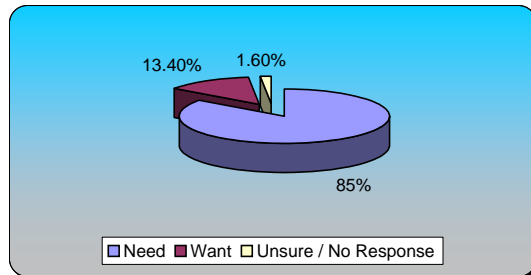
37.) Remove Blighted Property (multiple choice)	Responses	
Increased	29	16.11%
Maintained	75	41.67%
Reduced	57	31.67%
Eliminated	15	8.33%
Unsure / No response	4	2.22%
<b>Totals</b>	<b>180</b>	<b>100%</b>



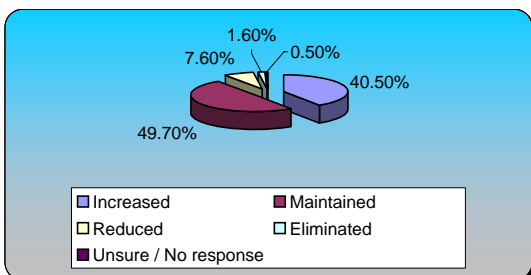
38.) Remove Blighted Property (multiple choice)	Responses	
High	23	12.78%
Somewhat High	39	21.67%
Moderate	59	32.78%
Somewhat Low	46	25.56%
Low	13	7.22%
<b>Totals</b>	<b>180</b>	<b>100%</b>



39.) Improve Drainage for Heavy Rains (multiple choice)	Responses	
Need	159	85.03%
Want	25	13.37%
Unsure / No Response	3	1.60%
<b>Totals</b>	<b>187</b>	<b>100%</b>

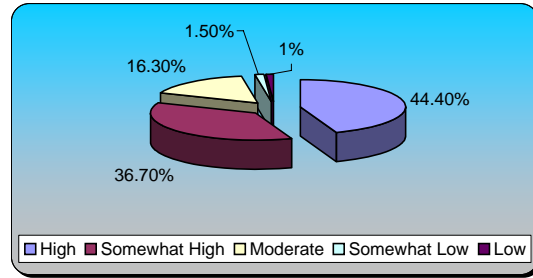


40.) Improve Drainage for Heavy Rains (multiple choice)	Responses	
Increased	75	40.54%
Maintained	92	49.73%
Reduced	14	7.57%
Eliminated	3	1.62%
Unsure / No response	1	0.54%
<b>Totals</b>	<b>185</b>	<b>100%</b>



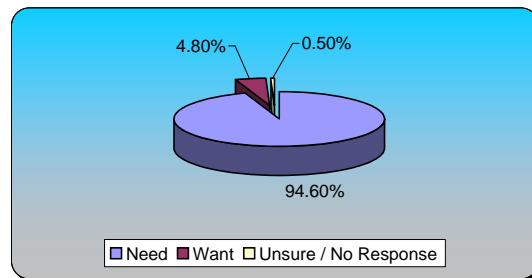
**41.) Improve Drainage for Heavy Rains (multiple choice)**

	Responses	
High	87	44.39%
Somewhat High	72	36.73%
Moderate	32	16.33%
Somewhat Low	3	1.53%
Low	2	1.02%
<b>Totals</b>	<b>196</b>	<b>100%</b>



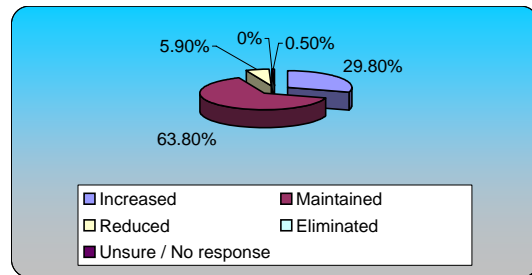
**42.) Maintain Streets, Roads, & Bridges (multiple choice)**

	Responses	
Need	177	94.65%
Want	9	4.81%
Unsure / No Response	1	0.53%
<b>Totals</b>	<b>187</b>	<b>100%</b>



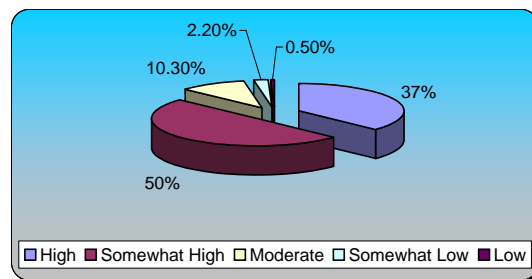
**43.) Maintain Streets, Roads, & Bridges (multiple choice)**

	Responses	
Increased	56	29.79%
Maintained	120	63.83%
Reduced	11	5.85%
Eliminated	0	0%
Unsure / No response	1	0.53%
<b>Totals</b>	<b>188</b>	<b>100%</b>

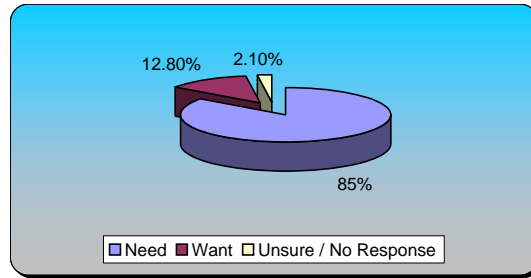


**44.) Maintain Streets, Roads, & Bridges (multiple choice)**

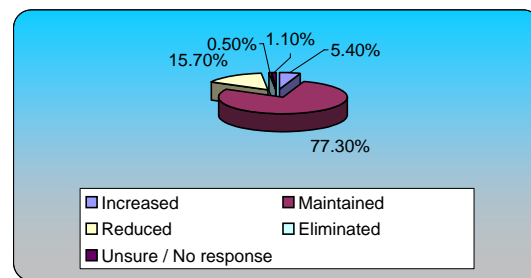
	Responses	
High	68	36.96%
Somewhat High	92	50%
Moderate	19	10.33%
Somewhat Low	4	2.17%
Low	1	0.54%
<b>Totals</b>	<b>184</b>	<b>100%</b>



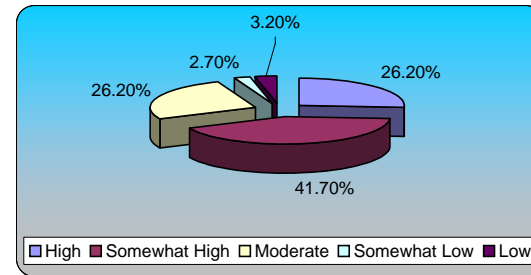
<b>45.) Maintain Traffic Signals (multiple choice)</b>	<b>Responses</b>	
Need	159	85.03%
Want	24	12.83%
Unsure / No Response	4	2.14%
<b>Totals</b>	<b>187</b>	<b>100%</b>



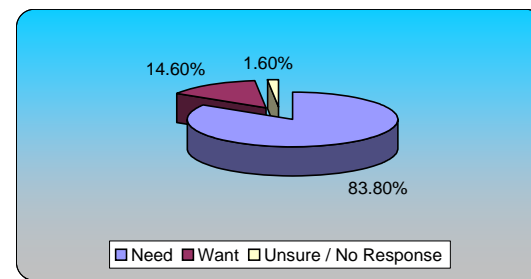
<b>46.) Maintain Traffic Signals (multiple choice)</b>	<b>Responses</b>	
Increased	10	5.41%
Maintained	143	77.30%
Reduced	29	15.68%
Eliminated	1	0.54%
Unsure / No response	2	1.08%
<b>Totals</b>	<b>185</b>	<b>100%</b>



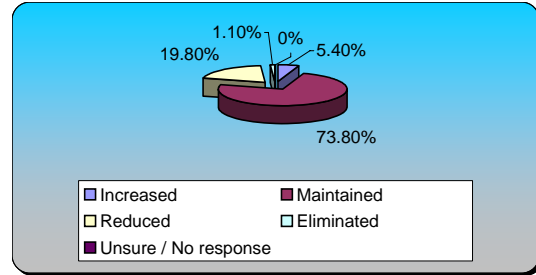
<b>47.) Maintain Traffic Signals (multiple choice)</b>	<b>Responses</b>	
High	49	26.20%
Somewhat High	78	41.71%
Moderate	49	26.20%
Somewhat Low	5	2.67%
Low	6	3.21%
<b>Totals</b>	<b>187</b>	<b>100%</b>



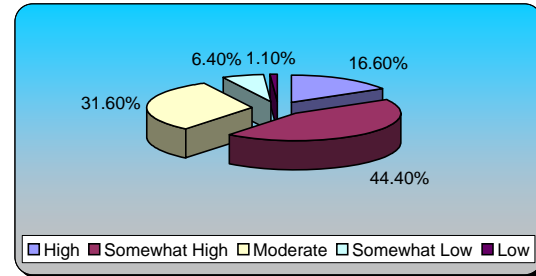
<b>48.) Maintain City Street Lighting (multiple choice)</b>	<b>Responses</b>	
Need	155	83.78%
Want	27	14.59%
Unsure / No Response	3	1.62%
<b>Totals</b>	<b>185</b>	<b>100%</b>



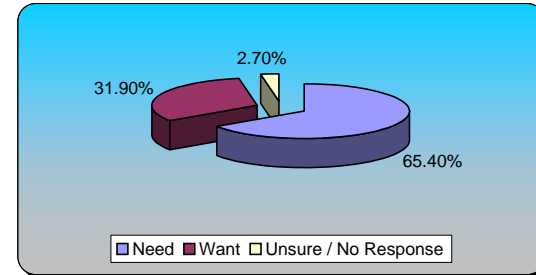
49.) Maintain City Street Lighting (multiple choice)		Responses	
Increased	10	5.35%	
Maintained	138	73.80%	
Reduced	37	19.79%	
Eliminated	2	1.07%	
Unsure / No response	0	0%	
<b>Totals</b>	<b>187</b>	<b>100%</b>	



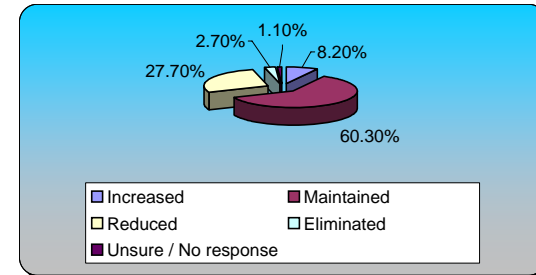
50.) Maintain City Street Lighting (multiple choice)		Responses	
High	31	16.58%	
Somewhat High	83	44.39%	
Moderate	59	31.55%	
Somewhat Low	12	6.42%	
Low	2	1.07%	
<b>Totals</b>	<b>187</b>	<b>100%</b>	



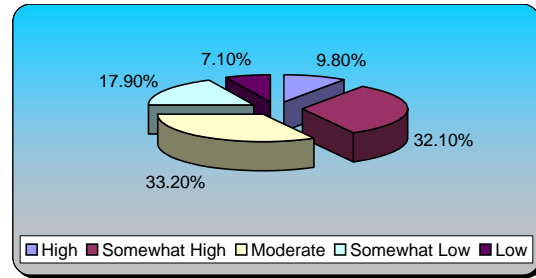
51.) Insect & Mosquito Control (multiple choice)		Responses	
Need	123	65.43%	
Want	60	31.91%	
Unsure / No Response	5	2.66%	
<b>Totals</b>	<b>188</b>	<b>100%</b>	



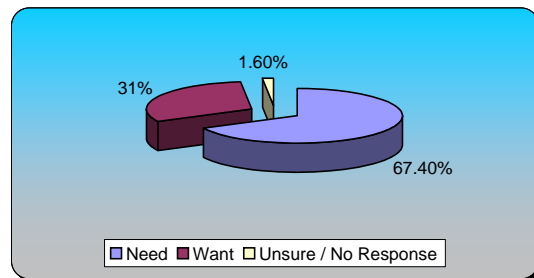
52.) Insect & Mosquito Control (multiple choice)		Responses	
Increased	15	8.15%	
Maintained	111	60.33%	
Reduced	51	27.72%	
Eliminated	5	2.72%	
Unsure / No response	2	1.09%	
<b>Totals</b>	<b>184</b>	<b>100%</b>	



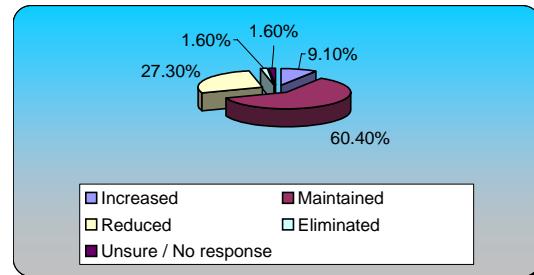
<b>53.) Insect &amp; Mosquito Control (multiple choice)</b>		<b>Responses</b>	
High	18	9.78%	
Somewhat High	59	32.07%	
Moderate	61	33.15%	
Somewhat Low	33	17.93%	
Low	13	7.07%	
<b>Totals</b>	<b>184</b>	<b>100%</b>	



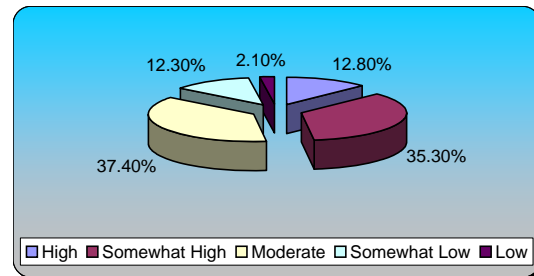
<b>54.) Maintain Parks &amp; Playgrounds (multiple choice)</b>		<b>Responses</b>	
Need	126	67.38%	
Want	58	31.02%	
Unsure / No Response	3	1.60%	
<b>Totals</b>	<b>187</b>	<b>100%</b>	



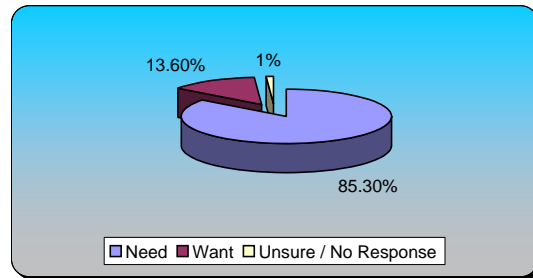
<b>55.) Maintain Parks &amp; Playgrounds (multiple choice)</b>		<b>Responses</b>	
Increased	17	9.09%	
Maintained	113	60.43%	
Reduced	51	27.27%	
Eliminated	3	1.60%	
Unsure / No response	3	1.60%	
<b>Totals</b>	<b>187</b>	<b>100%</b>	



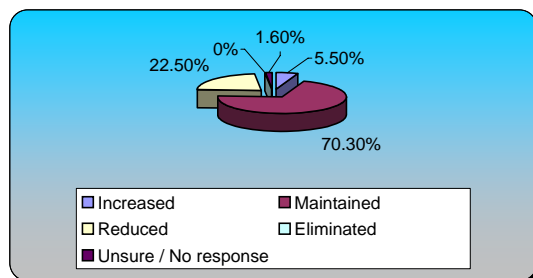
<b>56.) Maintain Parks &amp; Playgrounds (multiple choice)</b>		<b>Responses</b>	
High	24	12.83%	
Somewhat High	66	35.29%	
Moderate	70	37.43%	
Somewhat Low	23	12.30%	
Low	4	2.14%	
<b>Totals</b>	<b>187</b>	<b>100%</b>	



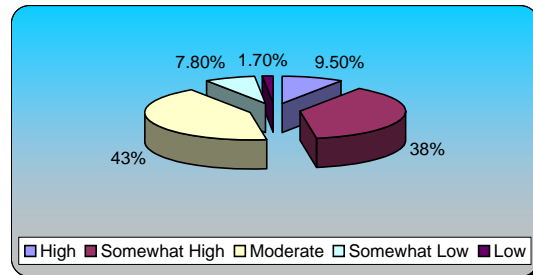
<u>57.) Upkeep of Public Facilities (multiple choice)</u>	<u>Responses</u>	
Need	163	85.34%
Want	26	13.61%
Unsure / No Response	2	1.05%
<b>Totals</b>	<b>191</b>	<b>100%</b>



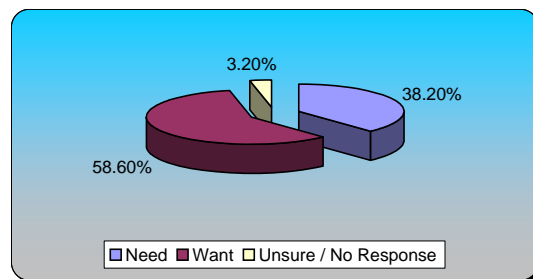
<u>58.) Upkeep of Public Facilities (multiple choice)</u>	<u>Responses</u>	
Increased	10	5.49%
Maintained	128	70.33%
Reduced	41	22.53%
Eliminated	0	0%
Unsure / No response	3	1.65%
<b>Totals</b>	<b>182</b>	<b>100%</b>



<u>59.) Upkeep of Public Facilities (multiple choice)</u>	<u>Responses</u>	
High	17	9.50%
Somewhat High	68	37.99%
Moderate	77	43.02%
Somewhat Low	14	7.82%
Low	3	1.68%
<b>Totals</b>	<b>179</b>	<b>100%</b>



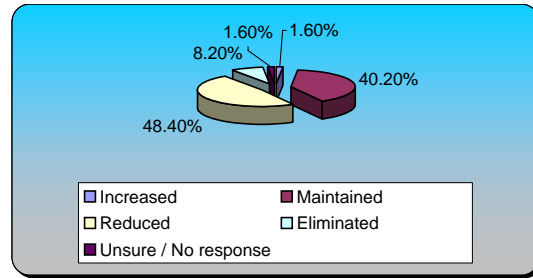
<u>60.) Maintain Medians (multiple choice)</u>	<u>Responses</u>	
Need	71	38.17%
Want	109	58.60%
Unsure / No Response	6	3.23%
<b>Totals</b>	<b>186</b>	<b>100%</b>



**61.) Maintain Medians (multiple choice)**

**Responses**

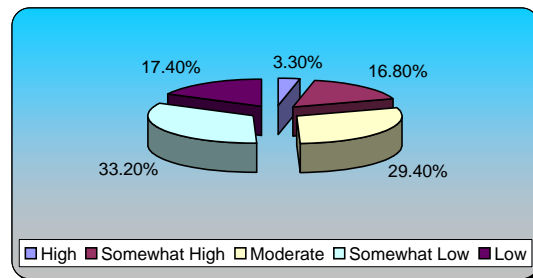
Increased	3	1.63%
Maintained	74	40.22%
Reduced	89	48.37%
Eliminated	15	8.15%
Unsure / No response	3	1.63%
<b>Totals</b>	<b>184</b>	<b>100%</b>



**62.) Maintain Medians (multiple choice)**

**Responses**

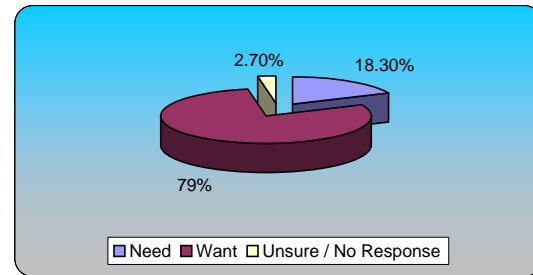
High	6	3.26%
Somewhat High	31	16.85%
Moderate	54	29.35%
Somewhat Low	61	33.15%
Low	32	17.39%
<b>Totals</b>	<b>184</b>	<b>100%</b>



**63.) Enhance Landscaping (multiple choice)**

**Responses**

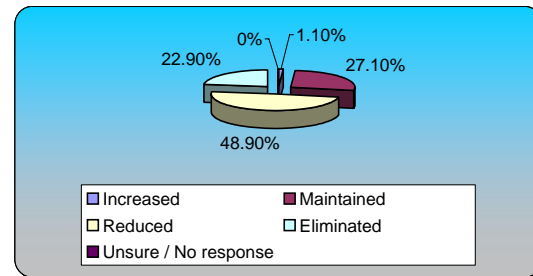
Need	34	18.28%
Want	147	79.03%
Unsure / No Response	5	2.69%
<b>Totals</b>	<b>186</b>	<b>100%</b>



**64.) Enhance Landscaping (multiple choice)**

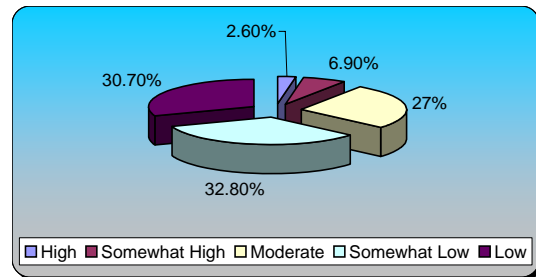
**Responses**

Increased	2	1.06%
Maintained	51	27.13%
Reduced	92	48.94%
Eliminated	43	22.87%
Unsure / No response	0	0%
<b>Totals</b>	<b>188</b>	<b>100%</b>

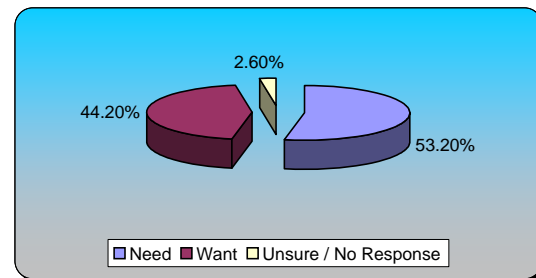




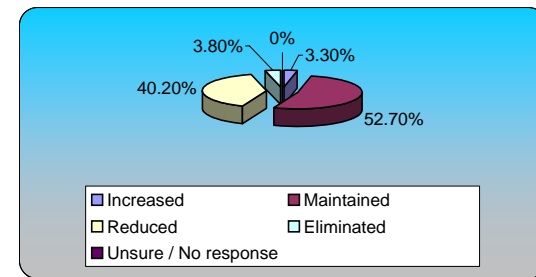
65.) Enhance Landscaping (multiple choice)	Responses	
High	5	2.65%
Somewhat High	13	6.88%
Moderate	51	26.98%
Somewhat Low	62	32.80%
Low	58	30.69%
<b>Totals</b>	<b>189</b>	<b>100%</b>



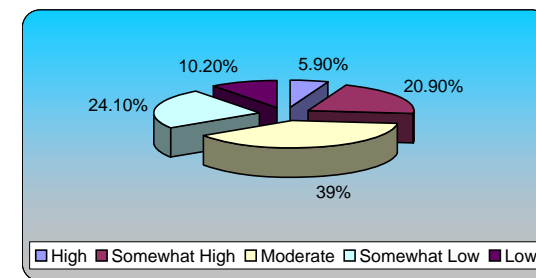
66.) Maintain Athletic Fields (multiple choice)	Responses	
Need	101	53.16%
Want	84	44.21%
Unsure / No Response	5	2.63%
<b>Totals</b>	<b>190</b>	<b>100%</b>



67.) Maintain Athletic Fields (multiple choice)	Responses	
Increased	6	3.26%
Maintained	97	52.72%
Reduced	74	40.22%
Eliminated	7	3.80%
Unsure / No response	0	0%
<b>Totals</b>	<b>184</b>	<b>100%</b>

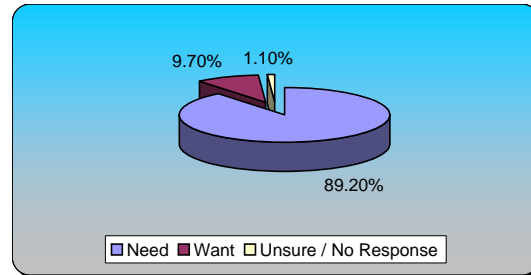


68.) Maintain Athletic Fields (multiple choice)	Responses	
High	11	5.88%
Somewhat High	39	20.86%
Moderate	73	39.04%
Somewhat Low	45	24.06%
Low	19	10.16%
<b>Totals</b>	<b>187</b>	<b>100%</b>



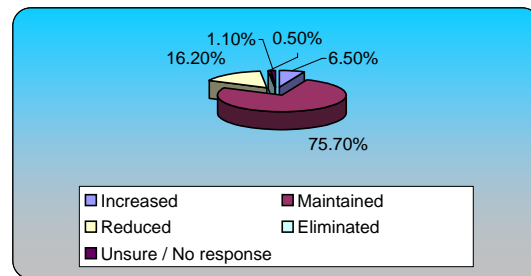
**69.) Building Inspections (multiple choice) Responses**

Need	165	89.19%
Want	18	9.73%
Unsure / No Response	2	1.08%
<b>Totals</b>	<b>185</b>	<b>100%</b>



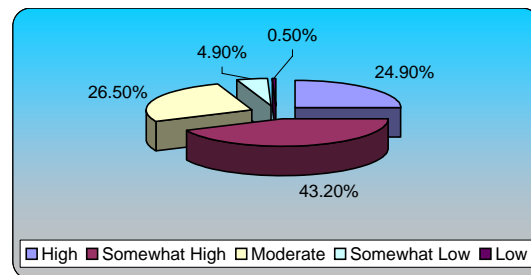
**70.) Building Inspections (multiple choice) Responses**

Increased	12	6.49%
Maintained	140	75.68%
Reduced	30	16.22%
Eliminated	1	0.54%
Unsure / No response	2	1.08%
<b>Totals</b>	<b>185</b>	<b>100%</b>



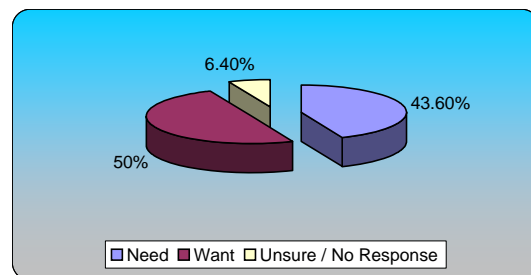
**71.) Building Inspections (multiple choice) Responses**

High	46	24.86%
Somewhat High	80	43.24%
Moderate	49	26.49%
Somewhat Low	9	4.86%
Low	1	0.54%
<b>Totals</b>	<b>185</b>	<b>100%</b>



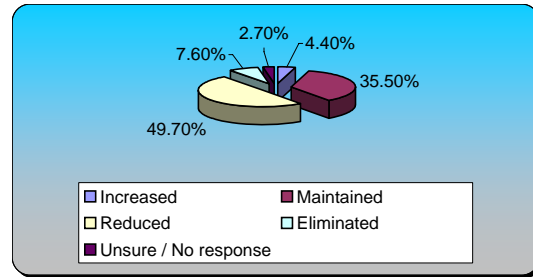
**72.) Strategic Community Planning (multiple choice) Responses**

Need	81	43.55%
Want	93	50%
Unsure / No Response	12	6.45%
<b>Totals</b>	<b>186</b>	<b>100%</b>



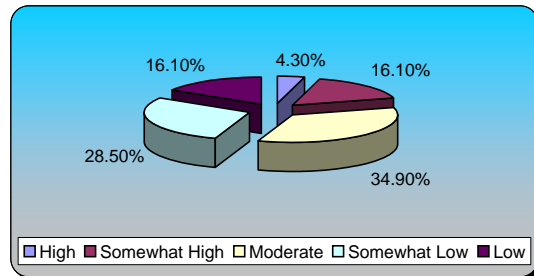
**73.) Strategic Community Planning (multiple choice) Responses**

Increased	8	4.37%
Maintained	65	35.52%
Reduced	91	49.73%
Eliminated	14	7.65%
Unsure / No response	5	2.73%
<b>Totals</b>	<b>183</b>	<b>100%</b>



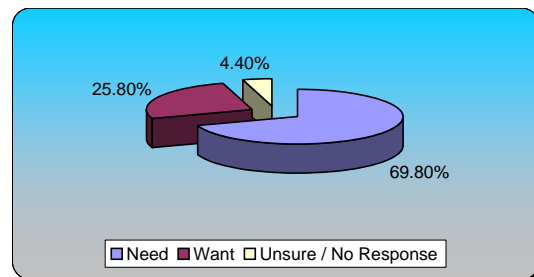
**74.) Strategic Community Planning (multiple choice) Responses**

High	8	4.30%
Somewhat High	30	16.13%
Moderate	65	34.95%
Somewhat Low	53	28.49%
Low	30	16.13%
<b>Totals</b>	<b>186</b>	<b>100%</b>



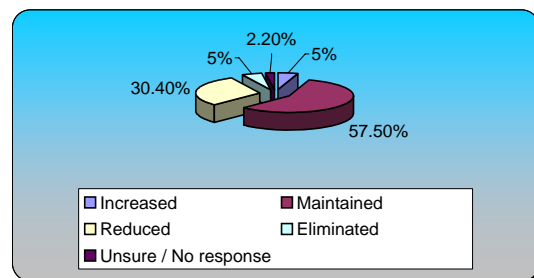
**75.) Enforcing Zoning Ordinances (multiple choice) Responses**

Need	127	69.78%
Want	47	25.82%
Unsure / No Response	8	4.40%
<b>Totals</b>	<b>182</b>	<b>100%</b>

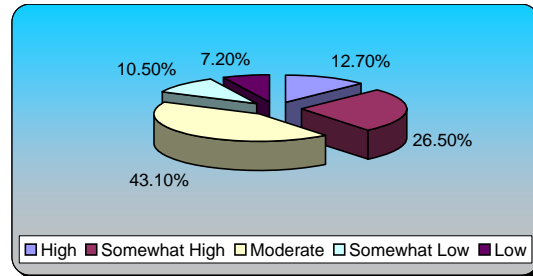


**76.) Enforcing Zoning Ordinances (multiple choice) Responses**

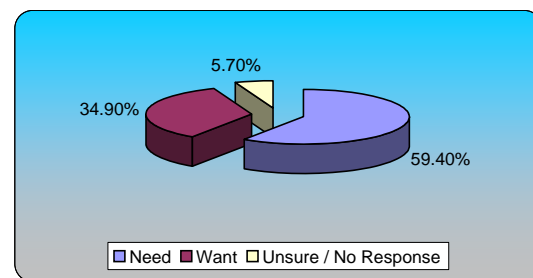
Increased	9	4.97%
Maintained	104	57.46%
Reduced	55	30.39%
Eliminated	9	4.97%
Unsure / No response	4	2.21%
<b>Totals</b>	<b>181</b>	<b>100%</b>



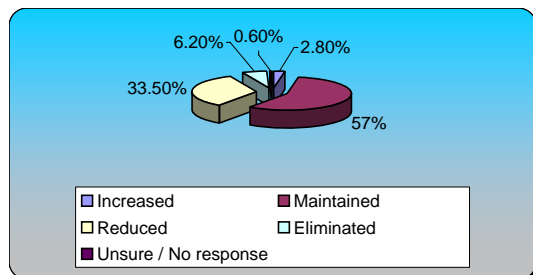
77.) Enforcing Zoning Ordinances (multiple choice)		Responses	
High	23	12.71%	
Somewhat High	48	26.52%	
Moderate	78	43.09%	
Somewhat Low	19	10.50%	
Low	13	7.18%	
<b>Totals</b>	<b>181</b>	<b>100%</b>	



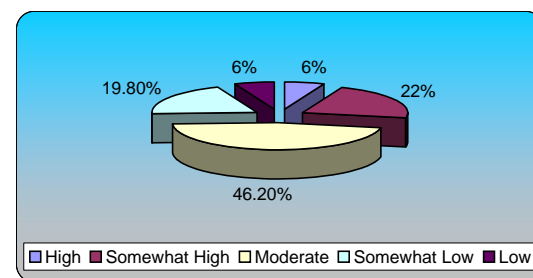
78.) Building & Land Use Plan Review (multiple choice)		Responses	
Need	104	59.43%	
Want	61	34.86%	
Unsure / No Response	10	5.71%	
<b>Totals</b>	<b>175</b>	<b>100%</b>	



79.) Building & Land Use Plan Review (multiple choice)		Responses	
Increased	5	2.79%	
Maintained	102	56.98%	
Reduced	60	33.52%	
Eliminated	11	6.15%	
Unsure / No response	1	0.56%	
<b>Totals</b>	<b>179</b>	<b>100%</b>	

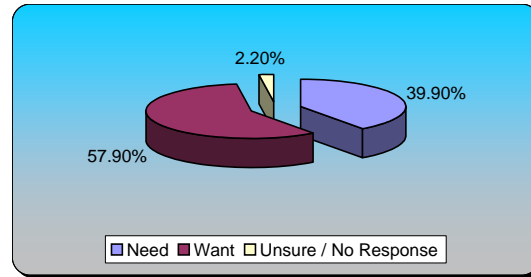


80.) Building & Land Use Plan Review (multiple choice)		Responses	
High	11	6.04%	
Somewhat High	40	21.98%	
Moderate	84	46.15%	
Somewhat Low	36	19.78%	
Low	11	6.04%	
<b>Totals</b>	<b>182</b>	<b>100%</b>	



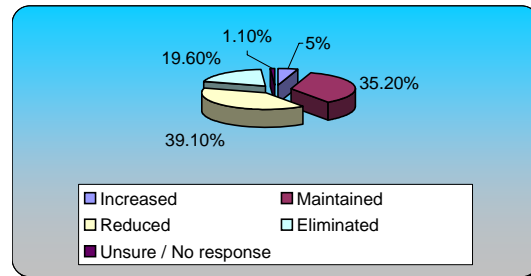
**81.) Services to Support Neighborhoods (multiple choice)**

	Responses	
Need	73	39.89%
Want	106	57.92%
Unsure / No Response	4	2.19%
<b>Totals</b>	<b>183</b>	<b>100%</b>



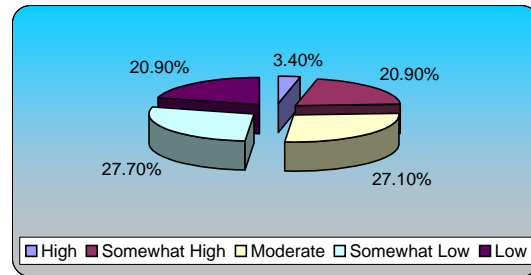
**82.) Services to Support Neighborhoods (multiple choice)**

	Responses	
Increased	9	5.03%
Maintained	63	35.20%
Reduced	70	39.11%
Eliminated	35	19.55%
Unsure / No response	2	1.12%
<b>Totals</b>	<b>179</b>	<b>100%</b>



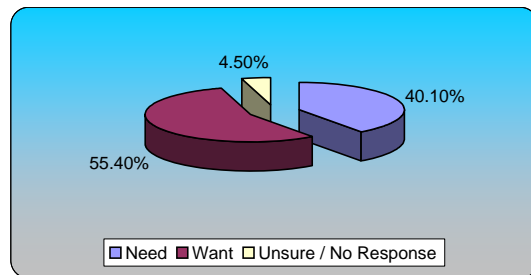
**83.) Services to Support Neighborhoods (multiple choice)**

	Responses	
High	6	3.39%
Somewhat High	37	20.90%
Moderate	48	27.12%
Somewhat Low	49	27.68%
Low	37	20.90%
<b>Totals</b>	<b>177</b>	<b>100%</b>



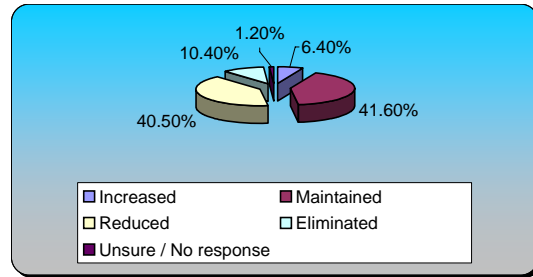
**84.) Foster Civic Engagement Opportunities (multiple choice)**

	Responses	
Need	71	40.11%
Want	98	55.37%
Unsure / No Response	8	4.52%
<b>Totals</b>	<b>177</b>	<b>100%</b>



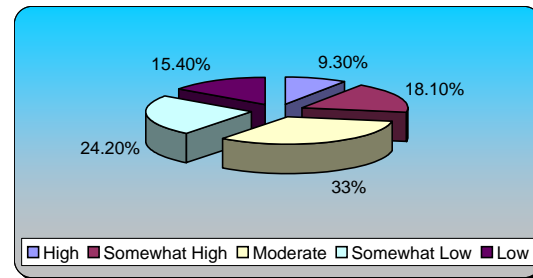
**85.) Foster Civic Engagement Opportunities (multiple choice)**

	Responses	
Increased	11	6.36%
Maintained	72	41.62%
Reduced	70	40.46%
Eliminated	18	10.40%
Unsure / No response	2	1.16%
<b>Totals</b>	<b>173</b>	<b>100%</b>



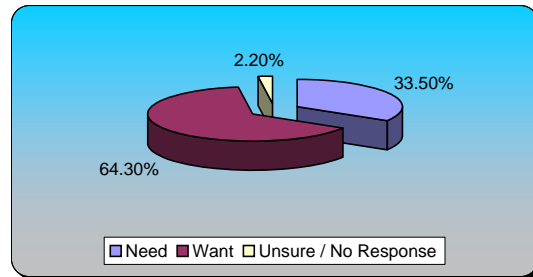
**86.) Fostering Civic Engagement Opportunities (multiple choice)**

	Responses	
High	17	9.34%
Somewhat High	33	18.13%
Moderate	60	32.97%
Somewhat Low	44	24.18%
Low	28	15.38%
<b>Totals</b>	<b>182</b>	<b>100%</b>



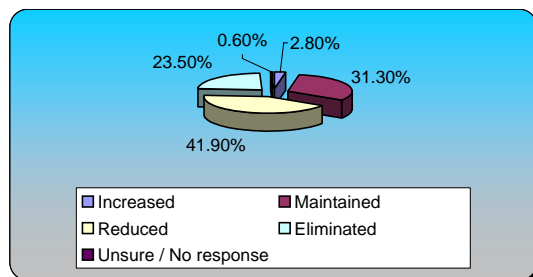
**87.) Improving Image of Neighborhoods (multiple choice)**

	Responses	
Need	61	33.52%
Want	117	64.29%
Unsure / No Response	4	2.20%
<b>Totals</b>	<b>182</b>	<b>100%</b>



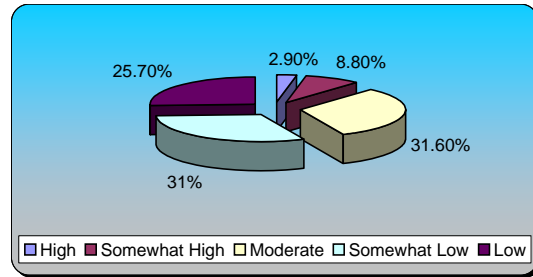
**88.) Improving Image of Neighborhoods (multiple choice)**

	Responses	
Increased	5	2.79%
Maintained	56	31.28%
Reduced	75	41.90%
Eliminated	42	23.46%
Unsure / No response	1	0.56%
<b>Totals</b>	<b>179</b>	<b>100%</b>



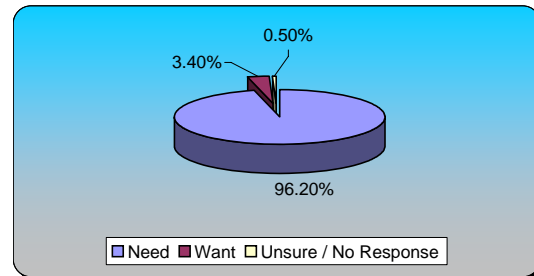
**89.) Improving Image of Neighborhoods (multiple choice)**

	Responses	
High	5	2.92%
Somewhat High	15	8.77%
Moderate	54	31.58%
Somewhat Low	53	30.99%
Low	44	25.73%
<b>Totals</b>	<b>171</b>	<b>100%</b>



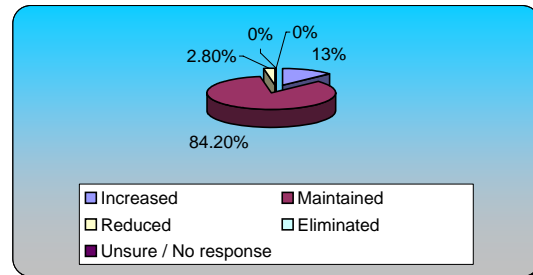
**90.) E911 - Dispatch (multiple choice)**

	Responses	
Need	200	96.15%
Want	7	3.37%
Unsure / No Response	1	0.48%
<b>Totals</b>	<b>208</b>	<b>100%</b>



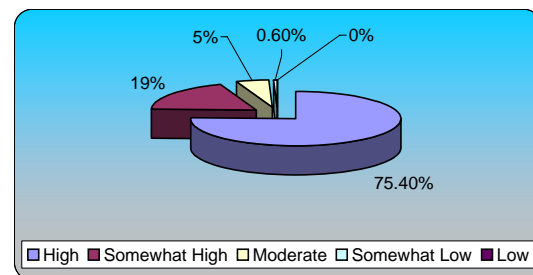
**91.) E911 - Dispatch (multiple choice)**

	Responses	
Increased	23	12.99%
Maintained	149	84.18%
Reduced	5	2.82%
Eliminated	0	0%
Unsure / No response	0	0%
<b>Totals</b>	<b>177</b>	<b>100%</b>



**92.) E911 - Dispatch (multiple choice)**

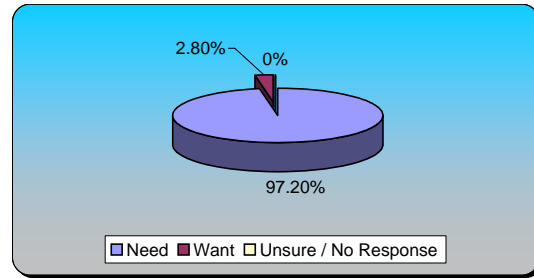
	Responses	
High	135	75.42%
Somewhat High	34	18.99%
Moderate	9	5.03%
Somewhat Low	1	0.56%
Low	0	0%
<b>Totals</b>	<b>179</b>	<b>100%</b>



**93.) Uniform Patrol (multiple choice)**

**Responses**

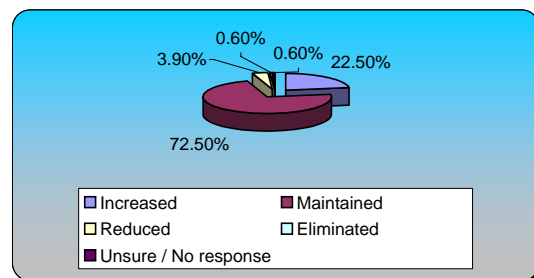
Need	174	97.21%
Want	5	2.79%
Unsure / No Response	0	0%
<b>Totals</b>	<b>179</b>	<b>100%</b>



**94.) Uniform Patrol (multiple choice)**

**Responses**

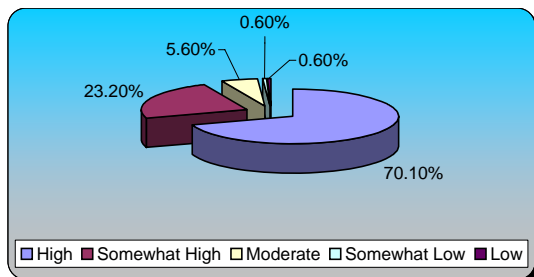
Increased	40	22.47%
Maintained	129	72.47%
Reduced	7	3.93%
Eliminated	1	0.56%
Unsure / No response	1	0.56%
<b>Totals</b>	<b>178</b>	<b>100%</b>



**95.) Uniform Patrol (multiple choice)**

**Responses**

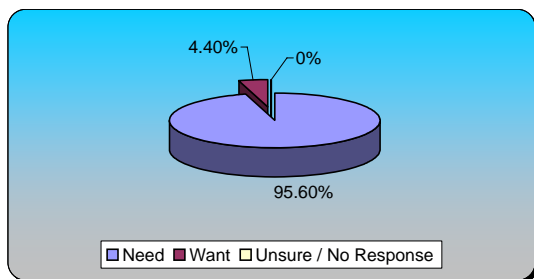
High	124	70.06%
Somewhat High	41	23.16%
Moderate	10	5.65%
Somewhat Low	1	0.56%
Low	1	0.56%
<b>Totals</b>	<b>177</b>	<b>100%</b>



**96.) Crime Investigation (multiple choice)**

**Responses**

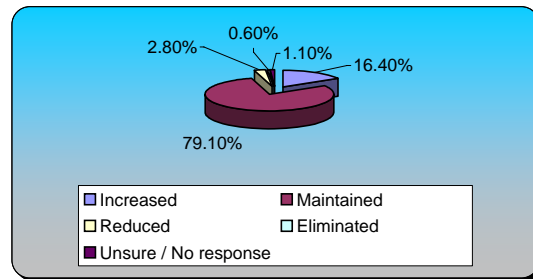
Need	175	95.63%
Want	8	4.37%
Unsure / No Response	0	0%
<b>Totals</b>	<b>183</b>	<b>100%</b>





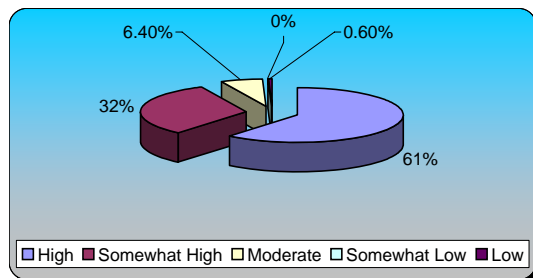
**97.) Crime Investigation (multiple choice)**

	Responses	
Increased	29	16.38%
Maintained	140	79.10%
Reduced	5	2.82%
Eliminated	1	0.56%
Unsure / No response	2	1.13%
<b>Totals</b>	<b>177</b>	<b>100%</b>



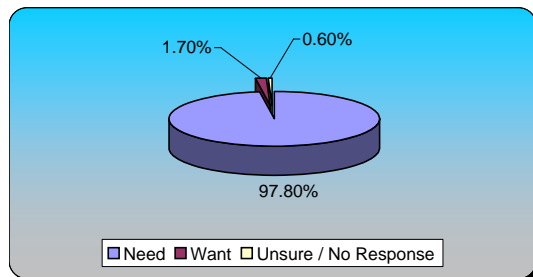
**98.) Crime Investigation (multiple choice)**

	Responses	
High	105	61.05%
Somewhat High	55	31.98%
Moderate	11	6.40%
Somewhat Low	0	0%
Low	1	0.58%
<b>Totals</b>	<b>172</b>	<b>100%</b>



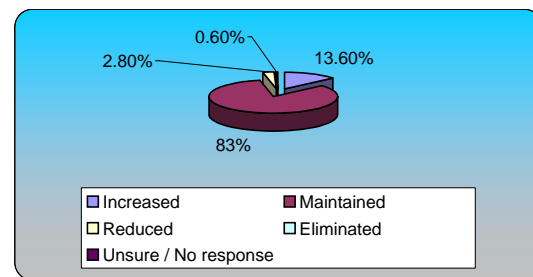
**99.) Emergency Medical & Fire Response (multiple choice)**

	Responses	
Need	176	97.78%
Want	3	1.67%
Unsure / No Response	1	0.56%
<b>Totals</b>	<b>180</b>	<b>100%</b>



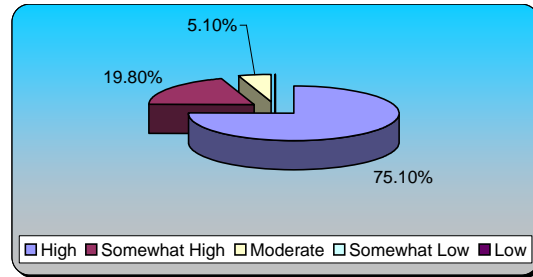
**100.) Emergency Medical & Fire Response (multiple choice)**

	Responses	
Increased	24	13.64%
Maintained	146	82.95%
Reduced	5	2.84%
Eliminated	0	0%
Unsure / No response	1	0.57%
<b>Totals</b>	<b>176</b>	<b>100%</b>



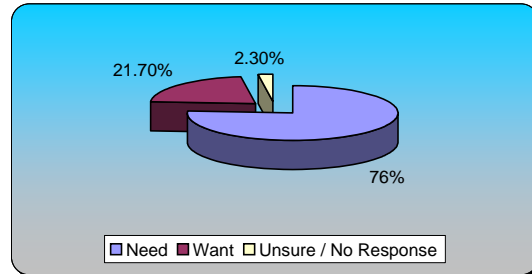
**101.) Emergency Medical & Fire Response (multiple choice)**

	Responses	
High	133	75.14%
Somewhat High	35	19.77%
Moderate	9	5.08%
Somewhat Low	0	0%
Low	0	0%
<b>Totals</b>	<b>177</b>	<b>100%</b>



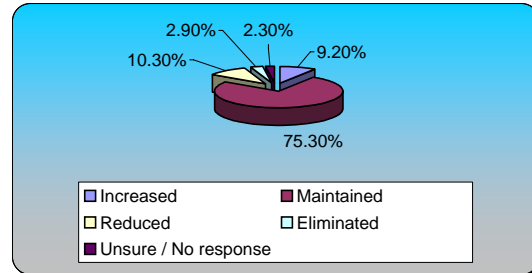
**102.) Financial Support for Volunteer Firefighters (multiple choice)**

	Responses	
Need	133	76%
Want	38	21.71%
Unsure / No Response	4	2.29%
<b>Totals</b>	<b>175</b>	<b>100%</b>



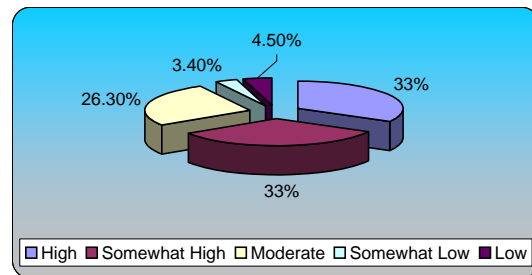
**103.) Financial Support for Volunteer Firefighters (multiple choice)**

	Responses	
Increased	16	9.20%
Maintained	131	75.29%
Reduced	18	10.34%
Eliminated	5	2.87%
Unsure / No response	4	2.30%
<b>Totals</b>	<b>174</b>	<b>100%</b>



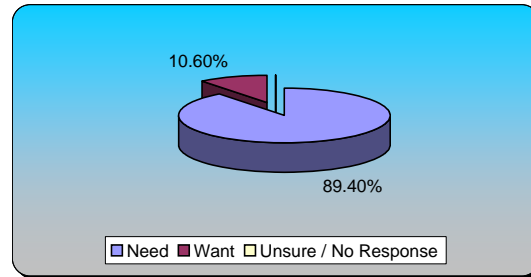
**104.) Financial Support for Volunteer Firefighters (multiple choice)**

	Responses	
High	59	32.96%
Somewhat High	59	32.96%
Moderate	47	26.26%
Somewhat Low	6	3.35%
Low	8	4.47%
<b>Totals</b>	<b>179</b>	<b>100%</b>



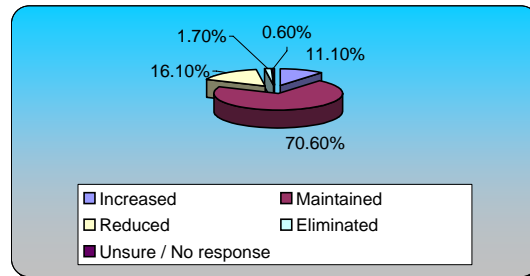
**105.) Disaster Preparedness & Management (multiple choice)**

	Responses	
Need	160	89.39%
Want	19	10.61%
Unsure / No Response	0	0%
<b>Totals</b>	<b>179</b>	<b>100%</b>



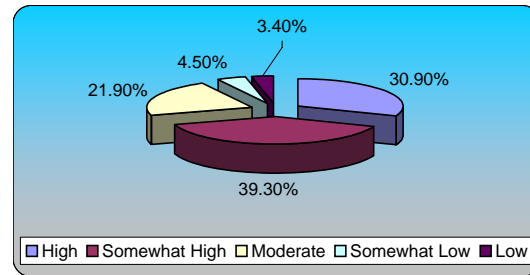
**106.) Disaster Preparedness & Management (multiple choice)**

	Responses	
Increased	20	11.11%
Maintained	127	70.56%
Reduced	29	16.11%
Eliminated	3	1.67%
Unsure / No response	1	0.56%
<b>Totals</b>	<b>180</b>	<b>100%</b>



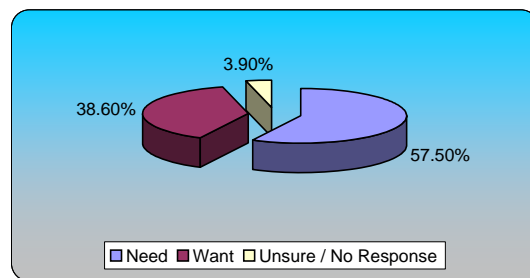
**107.) Disaster Preparedness & Management (multiple choice)**

	Responses	
High	55	30.90%
Somewhat High	70	39.33%
Moderate	39	21.91%
Somewhat Low	8	4.49%
Low	6	3.37%
<b>Totals</b>	<b>178</b>	<b>100%</b>

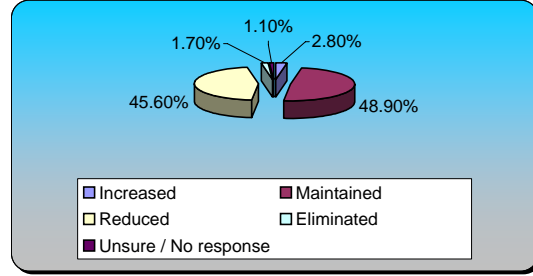


**108.) Animal Control Services (multiple choice)**

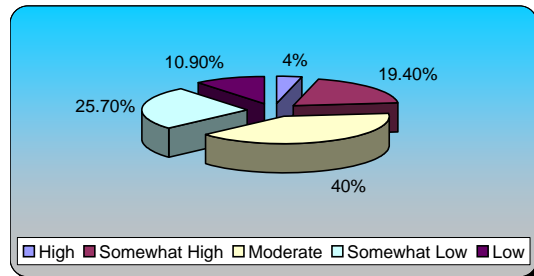
	Responses	
Need	103	57.54%
Want	69	38.55%
Unsure / No Response	7	3.91%
<b>Totals</b>	<b>179</b>	<b>100%</b>



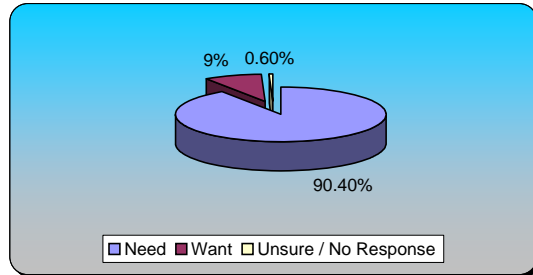
<b>109.) Animal Control Services (multiple choice)</b>		<b>Responses</b>	
Increased	5	2.78%	
Maintained	88	48.89%	
Reduced	82	45.56%	
Eliminated	3	1.67%	
Unsure / No response	2	1.11%	
<b>Totals</b>	<b>180</b>	<b>100%</b>	



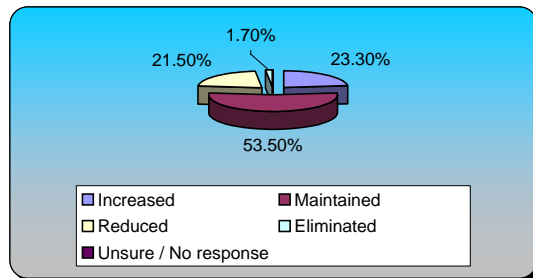
<b>110.) Animal Control Services (multiple choice)</b>		<b>Responses</b>	
High	7	4%	
Somewhat High	34	19.43%	
Moderate	70	40%	
Somewhat Low	45	25.71%	
Low	19	10.86%	
<b>Totals</b>	<b>175</b>	<b>100%</b>	



<b>111.) Public Schools for Grades K thru 12 (multiple choice)</b>		<b>Responses</b>	
Need	161	90.45%	
Want	16	8.99%	
Unsure / No Response	1	0.56%	
<b>Totals</b>	<b>178</b>	<b>100%</b>	

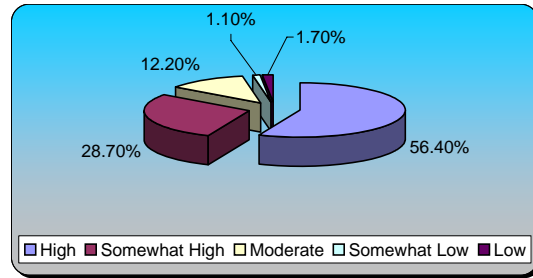


<b>112.) Public Schools for Grades K thru 12 (multiple choice)</b>		<b>Responses</b>	
Increased	40	23.26%	
Maintained	92	53.49%	
Reduced	37	21.51%	
Eliminated	3	1.74%	
Unsure / No response	0	0%	
<b>Totals</b>	<b>172</b>	<b>100%</b>	



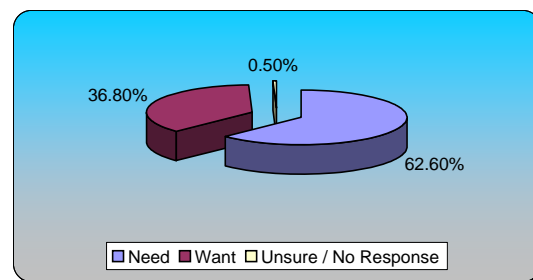
**113.) Public Schools for Grades K thru 12 (multiple choice)**

	Responses	
High	102	56.35%
Somewhat High	52	28.73%
Moderate	22	12.15%
Somewhat Low	2	1.10%
Low	3	1.66%
<b>Totals</b>	<b>181</b>	<b>100%</b>



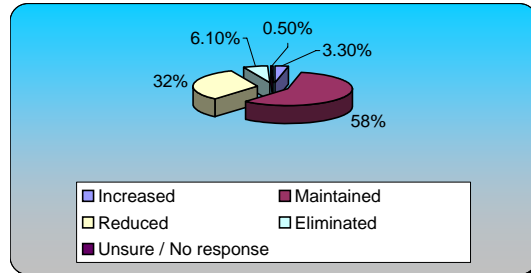
**114.) Maintain School Grounds (multiple choice)**

	Responses	
Need	114	62.64%
Want	67	36.81%
Unsure / No Response	1	0.55%
<b>Totals</b>	<b>182</b>	<b>100%</b>



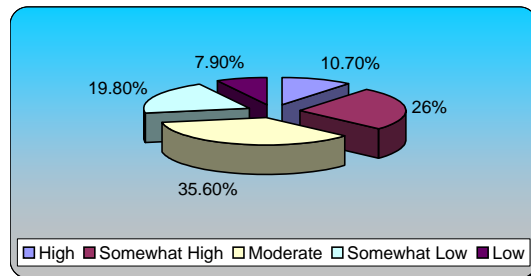
**115.) Maintain School Grounds (multiple choice)**

	Responses	
Increased	6	3.31%
Maintained	105	58.01%
Reduced	58	32.04%
Eliminated	11	6.08%
Unsure / No response	1	0.55%
<b>Totals</b>	<b>181</b>	<b>100%</b>

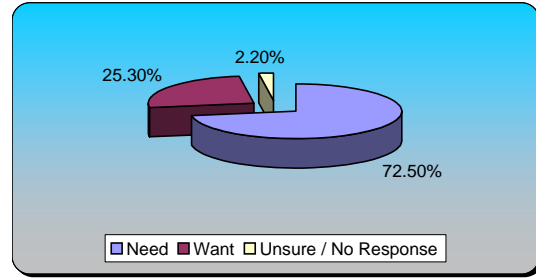


**116.) Maintain School Grounds (multiple choice)**

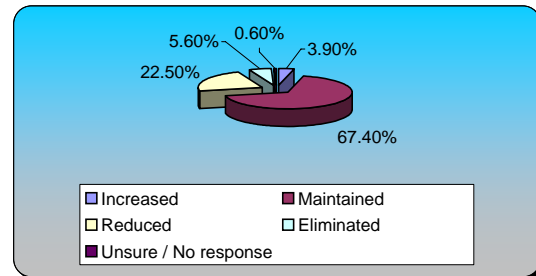
	Responses	
High	19	10.73%
Somewhat High	46	25.99%
Moderate	63	35.59%
Somewhat Low	35	19.77%
Low	14	7.91%
<b>Totals</b>	<b>177</b>	<b>100%</b>



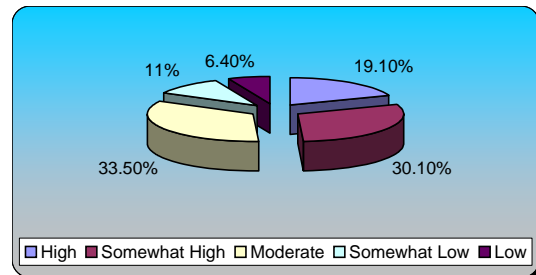
<b>117.) School Crossing Guards (multiple choice)</b>		<b>Responses</b>	
Need	129	72.47%	
Want	45	25.28%	
Unsure / No Response	4	2.25%	
<b>Totals</b>	<b>178</b>	<b>100%</b>	



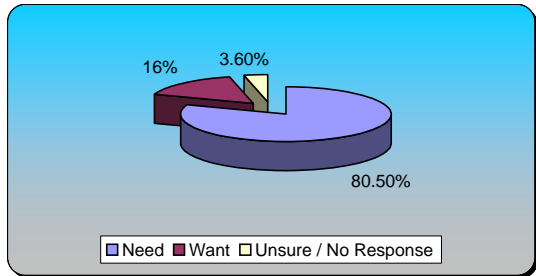
<b>118.) School Crossing Guards (multiple choice)</b>		<b>Responses</b>	
Increased	7	3.93%	
Maintained	120	67.42%	
Reduced	40	22.47%	
Eliminated	10	5.62%	
Unsure / No response	1	0.56%	
<b>Totals</b>	<b>178</b>	<b>100%</b>	



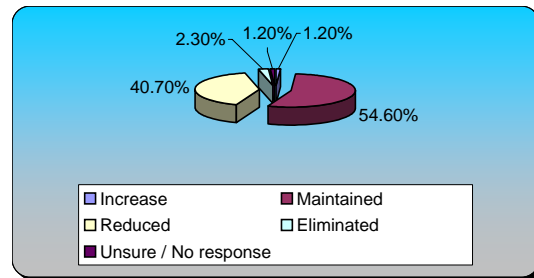
<b>119.) School Crossing Guards (multiple choice)</b>		<b>Responses</b>	
High	33	19.08%	
Somewhat High	52	30.06%	
Moderate	58	33.53%	
Somewhat Low	19	10.98%	
Low	11	6.36%	
<b>Totals</b>	<b>173</b>	<b>100%</b>	



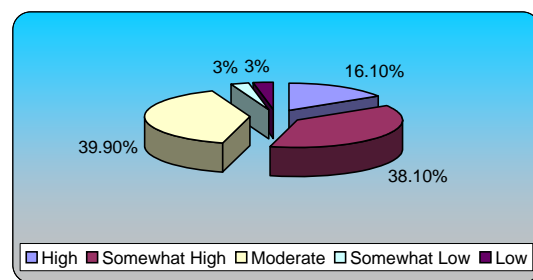
<b>120.) Internal Government Support (multiple choice)</b>		<b>Responses</b>	
Need	136	80.47%	
Want	27	15.98%	
Unsure / No Response	6	3.55%	
<b>Totals</b>	<b>169</b>	<b>100%</b>	



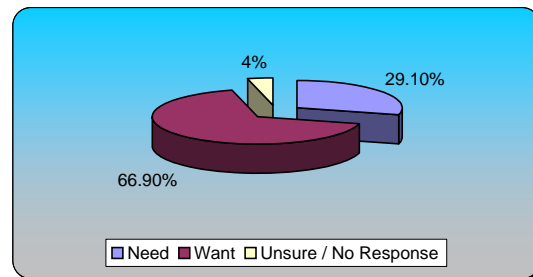
<b>121.) Internal Government Support (multiple choice)</b>		<b>Responses</b>	
Increase	2	1.16%	
Maintained	94	54.65%	
Reduced	70	40.70%	
Eliminated	4	2.33%	
Unsure / No response	2	1.16%	
<b>Totals</b>	<b>172</b>	<b>100%</b>	



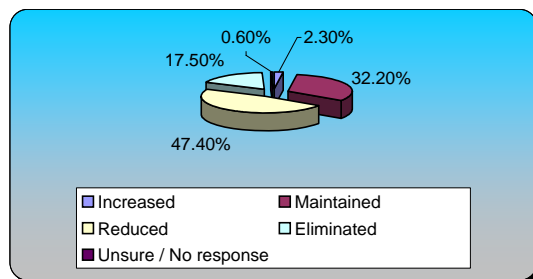
<b>122.) Internal Government Support (multiple choice)</b>		<b>Responses</b>	
High	27	16.07%	
Somewhat High	64	38.10%	
Moderate	67	39.88%	
Somewhat Low	5	2.98%	
Low	5	2.98%	
<b>Totals</b>	<b>168</b>	<b>100%</b>	



<b>123.) Cable Broadcast Programming (multiple choice)</b>		<b>Responses</b>	
Need	51	29.14%	
Want	117	66.86%	
Unsure / No Response	7	4%	
<b>Totals</b>	<b>175</b>	<b>100%</b>	

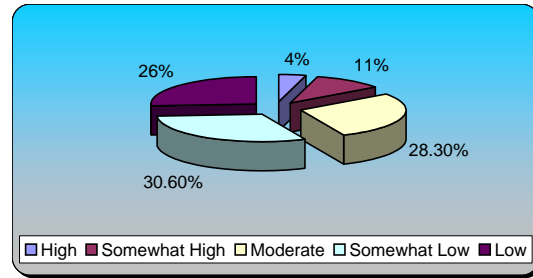


<b>124.) Cable Broadcast Programming (multiple choice)</b>		<b>Responses</b>	
Increased	4	2.34%	
Maintained	55	32.16%	
Reduced	81	47.37%	
Eliminated	30	17.54%	
Unsure / No response	1	0.58%	
<b>Totals</b>	<b>171</b>	<b>100%</b>	



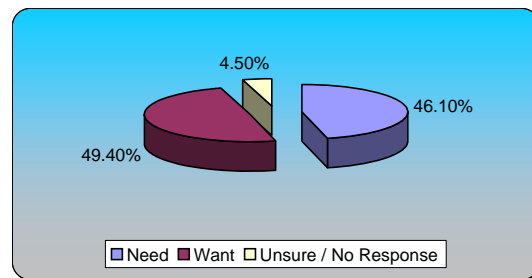
**125.) Cable Broadcast Programming (multiple choice)**

	Responses	
High	7	4.05%
Somewhat High	19	10.98%
Moderate	49	28.32%
Somewhat Low	53	30.64%
Low	45	26.01%
<b>Totals</b>	<b>173</b>	<b>100%</b>



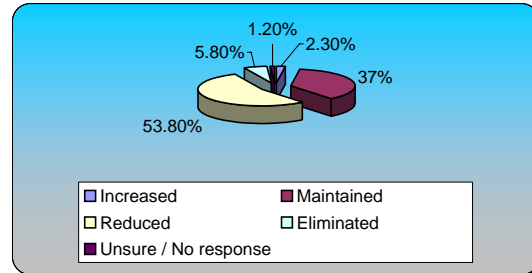
**126.) Communicating with the Public & Media (multiple choice)**

	Responses	
Need	82	46.07%
Want	88	49.44%
Unsure / No Response	8	4.49%
<b>Totals</b>	<b>178</b>	<b>100%</b>



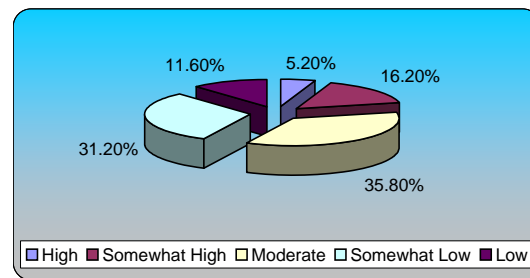
**127.) Communicating with the Public & Media (multiple choice)**

	Responses	
Increased	4	2.31%
Maintained	64	36.99%
Reduced	93	53.76%
Eliminated	10	5.78%
Unsure / No response	2	1.16%
<b>Totals</b>	<b>173</b>	<b>100%</b>



**128.) Communicating with the Public & Media (multiple choice)**

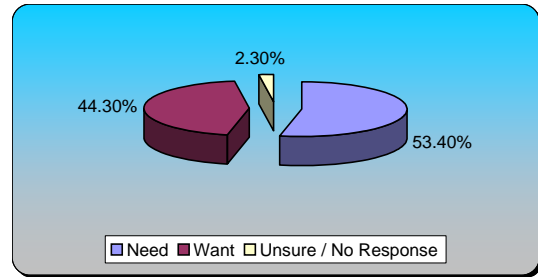
	Responses	
High	9	5.20%
Somewhat High	28	16.18%
Moderate	62	35.84%
Somewhat Low	54	31.21%
Low	20	11.56%
<b>Totals</b>	<b>173</b>	<b>100%</b>





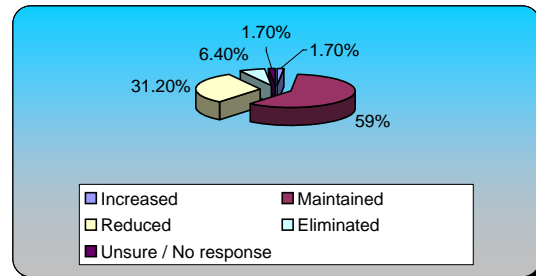
**129.) 311 Customer Call Center (multiple choice) Responses**

Need	94	53.41%
Want	78	44.32%
Unsure / No Response	4	2.27%
<b>Totals</b>	<b>176</b>	<b>100%</b>



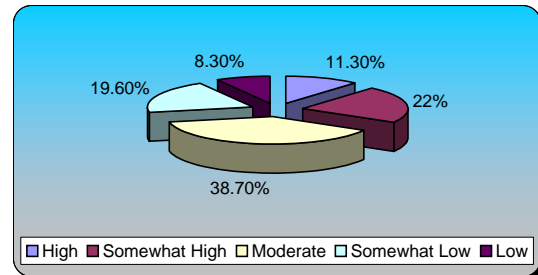
**130.) 311 Customer Call Center (multiple choice) Responses**

Increased	3	1.73%
Maintained	102	58.96%
Reduced	54	31.21%
Eliminated	11	6.36%
Unsure / No response	3	1.73%
<b>Totals</b>	<b>173</b>	<b>100%</b>



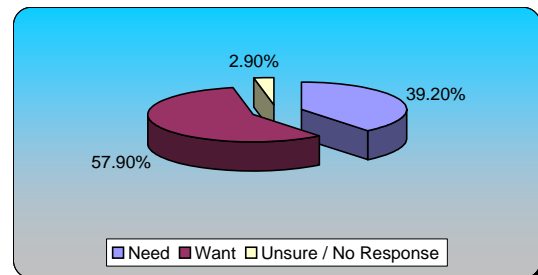
**131.) 311 Customer Call Center (multiple choice) Responses**

High	19	11.31%
Somewhat High	37	22.02%
Moderate	65	38.69%
Somewhat Low	33	19.64%
Low	14	8.33%
<b>Totals</b>	<b>168</b>	<b>100%</b>

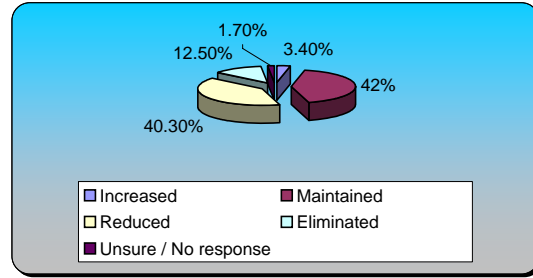


**132.) Coalition for Youth Services (multiple choice) Responses**

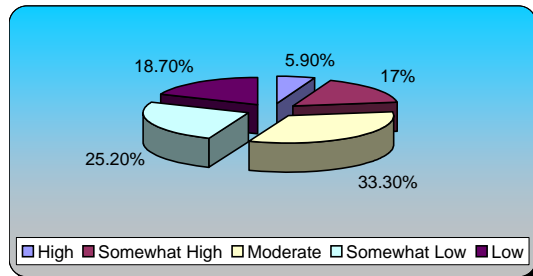
Need	67	39.18%
Want	99	57.89%
Unsure / No Response	5	2.92%
<b>Totals</b>	<b>171</b>	<b>100%</b>



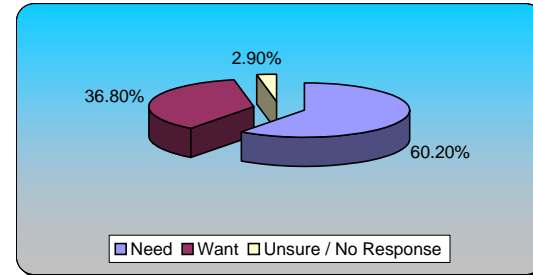
<b>133.) Coalition for Youth Services (multiple choice)</b>		<b>Responses</b>	
Increased	6	3.41%	
Maintained	74	42.05%	
Reduced	71	40.34%	
Eliminated	22	12.50%	
Unsure / No response	3	1.70%	
<b>Totals</b>	<b>176</b>	<b>100%</b>	



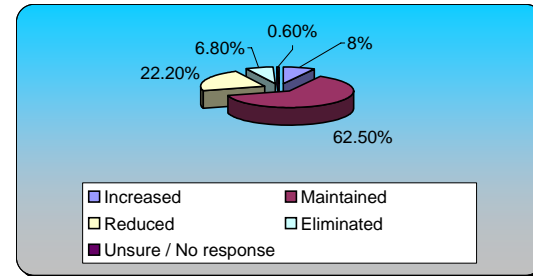
<b>134.) Coalition for Youth Services (multiple choice)</b>		<b>Responses</b>	
High	10	5.85%	
Somewhat High	29	16.96%	
Moderate	57	33.33%	
Somewhat Low	43	25.15%	
Low	32	18.71%	
<b>Totals</b>	<b>171</b>	<b>100%</b>	



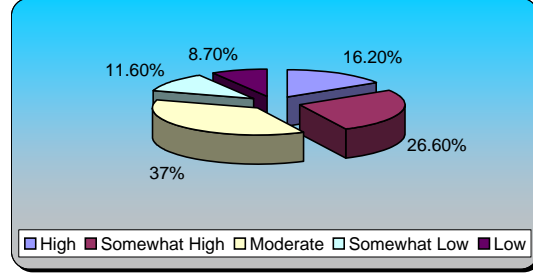
<b>135.) Healthy Start Program (multiple choice)</b>		<b>Responses</b>	
Need	103	60.23%	
Want	63	36.84%	
Unsure / No Response	5	2.92%	
<b>Totals</b>	<b>171</b>	<b>100%</b>	



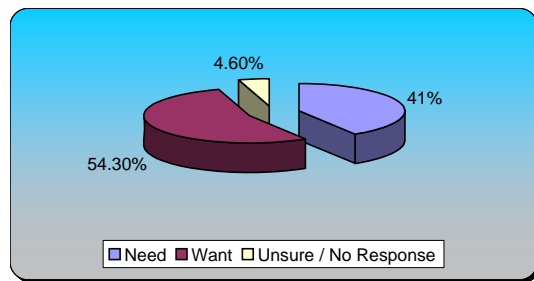
<b>136.) Healthy Start Program (multiple choice)</b>		<b>Responses</b>	
Increased	14	7.95%	
Maintained	110	62.50%	
Reduced	39	22.16%	
Eliminated	12	6.82%	
Unsure / No response	1	0.57%	
<b>Totals</b>	<b>176</b>	<b>100%</b>	



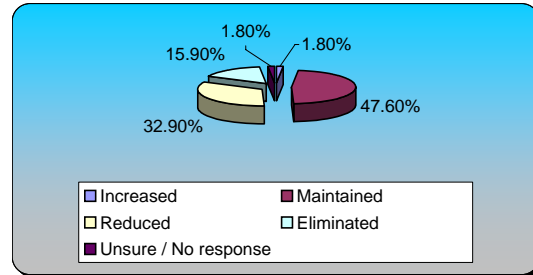
<u>137.) Healthy Start Program (multiple choice)</u>	<u>Responses</u>	
High	28	16.18%
Somewhat High	46	26.59%
Moderate	64	36.99%
Somewhat Low	20	11.56%
Low	15	8.67%
<b>Totals</b>	<b>173</b>	<b>100%</b>



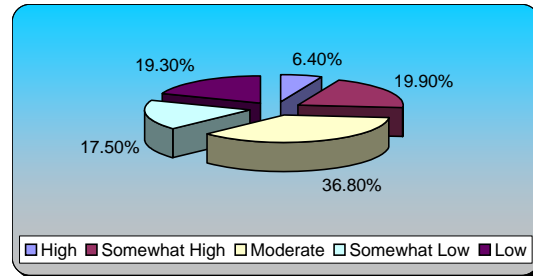
<u>138.) Parenting Programs (multiple choice)</u>	<u>Responses</u>	
Need	71	41.04%
Want	94	54.34%
Unsure / No Response	8	4.62%
<b>Totals</b>	<b>173</b>	<b>100%</b>



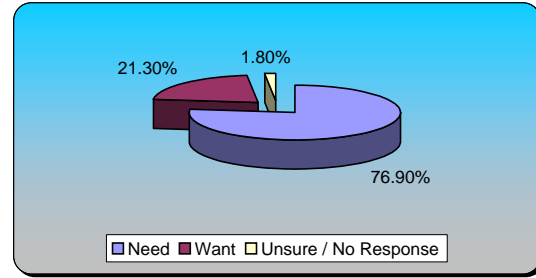
<u>139.) Parenting Programs (multiple choice)</u>	<u>Responses</u>	
Increased	3	1.76%
Maintained	81	47.65%
Reduced	56	32.94%
Eliminated	27	15.88%
Unsure / No response	3	1.76%
<b>Totals</b>	<b>170</b>	<b>100%</b>



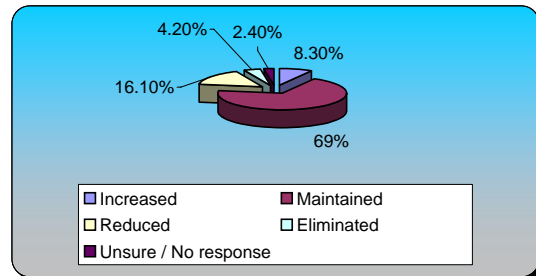
<u>140.) Parenting Programs (multiple choice)</u>	<u>Responses</u>	
High	11	6.43%
Somewhat High	34	19.88%
Moderate	63	36.84%
Somewhat Low	30	17.54%
Low	33	19.30%
<b>Totals</b>	<b>171</b>	<b>100%</b>



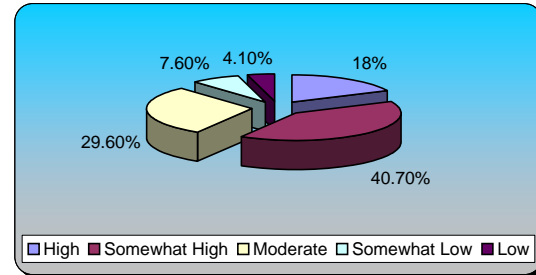
<u>141.) Social Services Programs (multiple choice)</u>	<u>Responses</u>	
Need	130	76.92%
Want	36	21.30%
Unsure / No Response	3	1.78%
<b>Totals</b>	<b>169</b>	<b>100%</b>



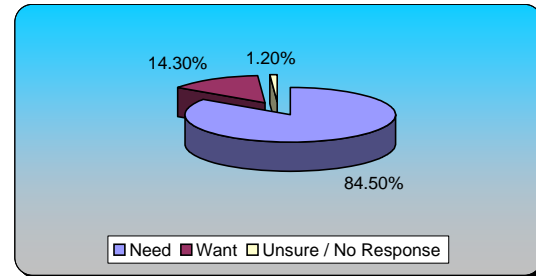
<u>142.) Social Services Programs (multiple choice)</u>	<u>Responses</u>	
Increased	14	8.33%
Maintained	116	69.05%
Reduced	27	16.07%
Eliminated	7	4.17%
Unsure / No response	4	2.38%
<b>Totals</b>	<b>168</b>	<b>100%</b>



<u>143.) Social Services Programs (multiple choice)</u>	<u>Responses</u>	
High	31	18.02%
Somewhat High	70	40.70%
Moderate	51	29.65%
Somewhat Low	13	7.56%
Low	7	4.07%
<b>Totals</b>	<b>172</b>	<b>100%</b>

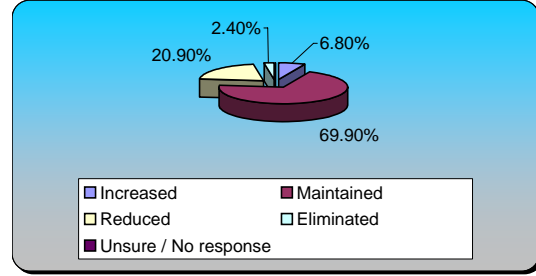


<u>144.) Health Department Programs (multiple choice)</u>	<u>Responses</u>	
Need	142	84.52%
Want	24	14.29%
Unsure / No Response	2	1.19%
<b>Totals</b>	<b>168</b>	<b>100%</b>



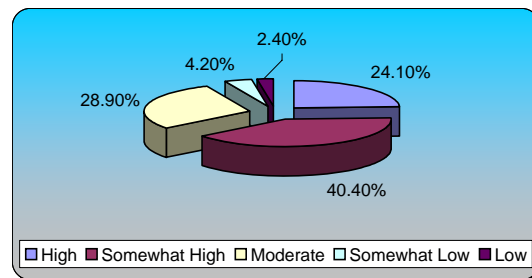
**145.) Health Department Programs (multiple choice) Responses**

Increased	11	6.75%
Maintained	114	69.94%
Reduced	34	20.86%
Eliminated	4	2.45%
Unsure / No response	0	0%
<b>Totals</b>	<b>163</b>	<b>100%</b>



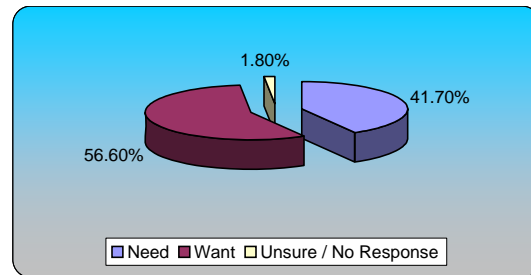
**146.) Health Department Programs (multiple choice) Responses**

High	40	24.10%
Somewhat High	67	40.36%
Moderate	48	28.92%
Somewhat Low	7	4.22%
Low	4	2.41%
<b>Totals</b>	<b>166</b>	<b>100%</b>



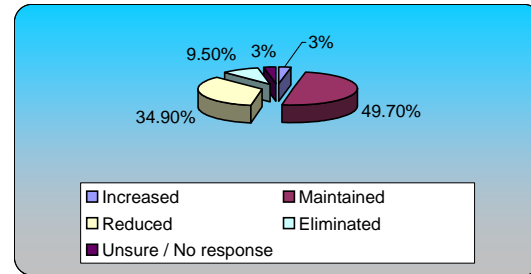
**147.) Teen Center Operations (multiple choice) Responses**

Need	70	41.67%
Want	95	56.55%
Unsure / No Response	3	1.79%
<b>Totals</b>	<b>168</b>	<b>100%</b>

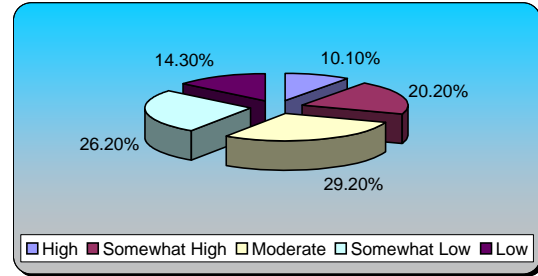


**148.) Teen Center Operations (multiple choice) Responses**

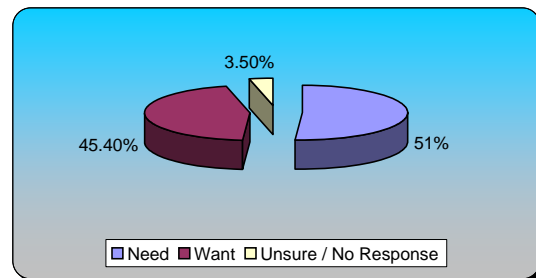
Increased	5	2.96%
Maintained	84	49.70%
Reduced	59	34.91%
Eliminated	16	9.47%
Unsure / No response	5	2.96%
<b>Totals</b>	<b>169</b>	<b>100%</b>



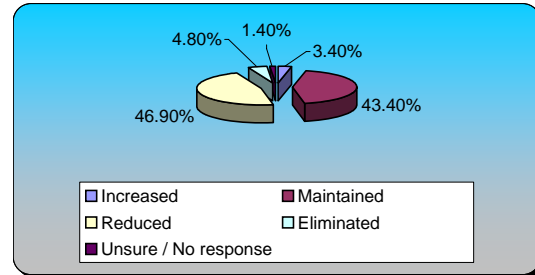
<u>149.) Teen Center Operations (multiple choice)</u>	<u>Responses</u>	
High	17	10.12%
Somewhat High	34	20.24%
Moderate	49	29.17%
Somewhat Low	44	26.19%
Low	24	14.29%
<b>Totals</b>	<b>168</b>	<b>100%</b>



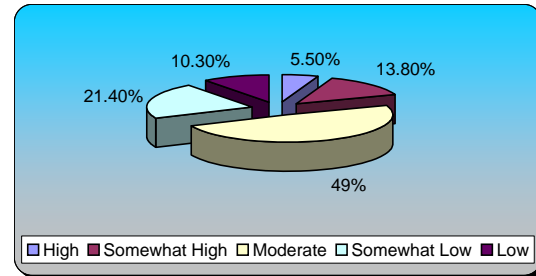
<u>150.) Outside Agency Funding (multiple choice)</u>	<u>Responses</u>	
Need	73	51.05%
Want	65	45.45%
Unsure / No Response	5	3.50%
<b>Totals</b>	<b>143</b>	<b>100%</b>



<u>151.) Outside Agency Funding (multiple choice)</u>	<u>Responses</u>	
Increased	5	3.45%
Maintained	63	43.45%
Reduced	68	46.90%
Eliminated	7	4.83%
Unsure / No response	2	1.38%
<b>Totals</b>	<b>145</b>	<b>100%</b>

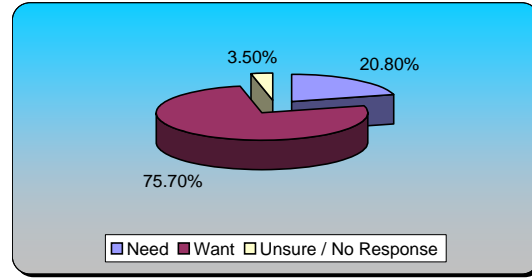


<u>152.) Outside Agency Funding (multiple choice)</u>	<u>Responses</u>	
High	8	5.52%
Somewhat High	20	13.79%
Moderate	71	48.97%
Somewhat Low	31	21.38%
Low	15	10.34%
<b>Totals</b>	<b>145</b>	<b>100%</b>



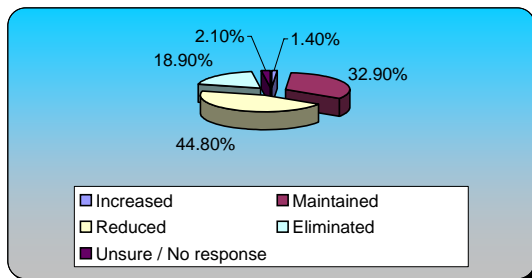
**153.) Arts Commission/American Theater (multiple choice)**

	Responses	
Need	30	20.83%
Want	109	75.69%
Unsure / No Response	5	3.47%
<b>Totals</b>	<b>144</b>	<b>100%</b>



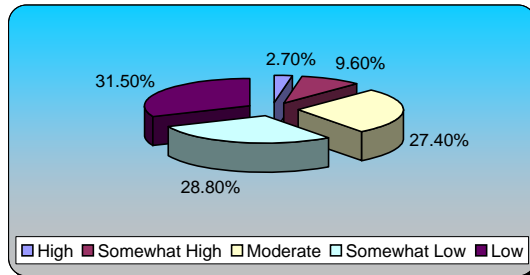
**154.) Arts Commission/American Theater (multiple choice)**

	Responses	
Increased	2	1.40%
Maintained	47	32.87%
Reduced	64	44.76%
Eliminated	27	18.88%
Unsure / No response	3	2.10%
<b>Totals</b>	<b>143</b>	<b>100%</b>



**155.) Arts Commission/American Theater (multiple choice)**

	Responses	
High	4	2.74%
Somewhat High	14	9.59%
Moderate	40	27.40%
Somewhat Low	42	28.77%
Low	46	31.51%
<b>Totals</b>	<b>146</b>	<b>100%</b>



**156.) Potential Revenue Options (multiple choice)**

	Responses	
Real Estate Tax Rate (To offset decreased ass...	47	10.09%
Personal Property Rate (includes Boat Tax and...	66	14.16%
Amusement / Admissions Tax	72	15.45%
Cigarette Tax	106	22.75%
Restaurant Meals Tax	41	8.80%
User Fees for Services (Golf Course, Recreati...	95	20.39%
No Increases in Fees or Taxes	36	7.73%
Unsure / No response	3	0.64%
<b>Totals</b>	<b>466</b>	<b>100%</b>

