

Session Name: Bethel HS 3-2-2013 11-16 AM

Date Created: 3/2/2013 8:23:14 AM

Active Participants: 169 of 169

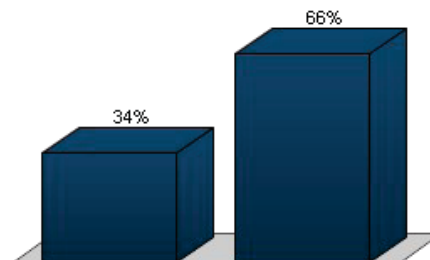
Average Score: 0.00%

Questions: 49

## Results By Question

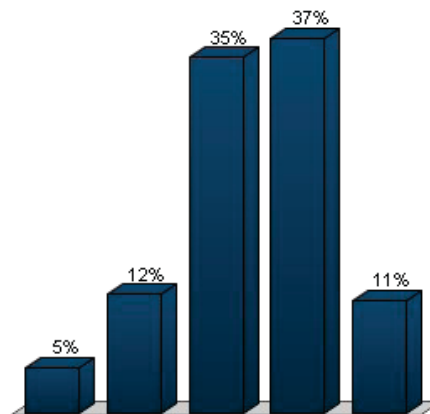
### 1.) Gender (Demographic Assignment)

Responses		
	Percent	Count
Male	34.21%	52
Female	65.79%	100
<b>Totals</b>	<b>100%</b>	<b>152</b>



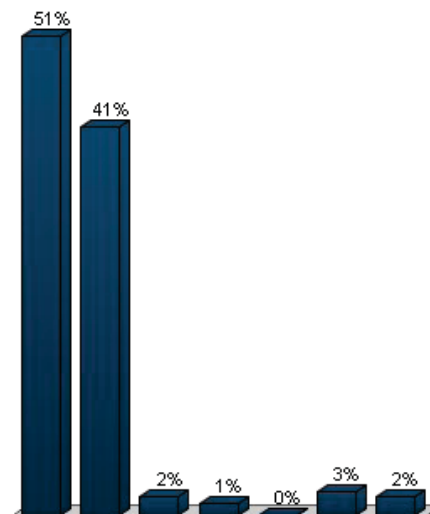
### 2.) Age (Demographic Assignment)

Responses		
	Percent	Count
19 & Under	4.58%	7
20 – 34	11.76%	18
35 – 49	35.29%	54
50 – 64	37.25%	57
65 & Over	11.11%	17
<b>Totals</b>	<b>100%</b>	<b>153</b>



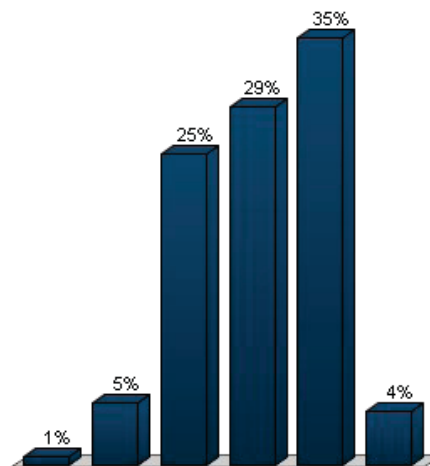
**3.) Race (Demographic Assignment)**

	Responses	
	Percent	Count
White or European American	50.97%	79
Black or African American	41.29%	64
Hispanic or Latino	1.94%	3
Asian	1.29%	2
Native Hawaiian/Other Pacific Islander	0%	0
Two or More Races	2.58%	4
Another Race or No Response	1.94%	3
<b>Totals</b>	<b>100%</b>	<b>155</b>



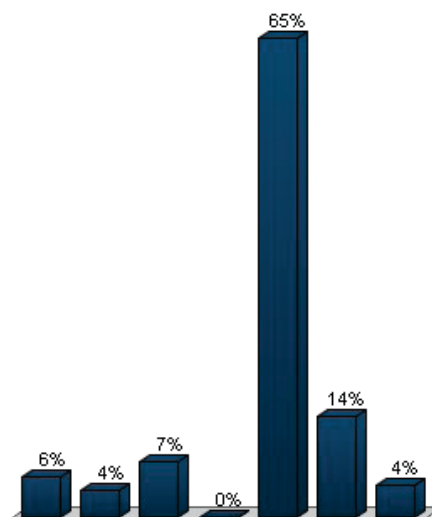
**4.) Education Level (Demographic Assignment)**

	Responses	
	Percent	Count
Some High School	0.64%	1
High School Degree or GED	5.1%	8
Some College or Associates Degree	25.48%	40
Bachelors Degree	29.3%	46
Masters Degree or Higher	35.03%	55
No Response	4.46%	7
<b>Totals</b>	<b>100%</b>	<b>157</b>



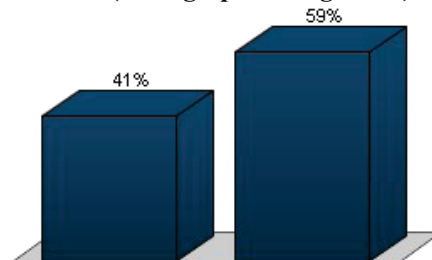
5.) ZipCode(Where you Live, Work, Invest, or Visit most) (Demographic Assignment)

Responses		
	Percent	Count
23661	5.59%	9
23663	3.73%	6
23664	7.45%	12
23665	0%	0
23666	65.22%	105
23669	13.66%	22
Outside of Hampton	4.35%	7
<b>Totals</b>	<b>100%</b>	<b>161</b>



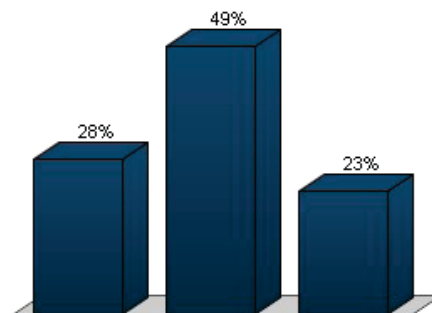
6.) Are There Children In Your Household Who Attend Hampton City Schools? (Demographic Assignment)

Responses		
	Percent	Count
Yes	40.88%	65
No	59.12%	94
<b>Totals</b>	<b>100%</b>	<b>159</b>



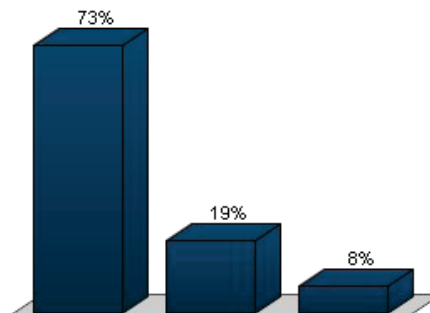
7.) Eliminate certain contributions (\$422,720) (Multiple Choice)

Responses		
	Percent	Count
I can live with this cut	28.39%	44
This cut is unacceptable	49.03%	76
Unsure/Undecided	22.58%	35
<b>Totals</b>	<b>100%</b>	<b>155</b>



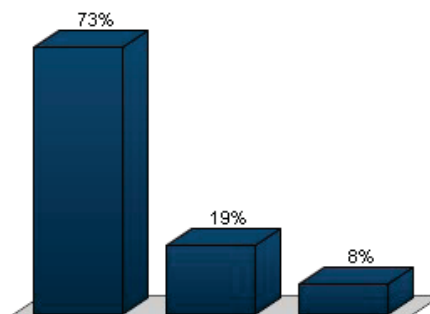
**8.) Suspend capital contributions to Christopher Newport University & Hampton University (\$125,000) (Multiple Choice)**

Responses		
	Percent	Count
I can live with this cut	72.96%	116
This cut is unacceptable	19.5%	31
Unsure/Undecided	7.55%	12
<b>Totals</b>	<b>100%</b>	<b>159</b>



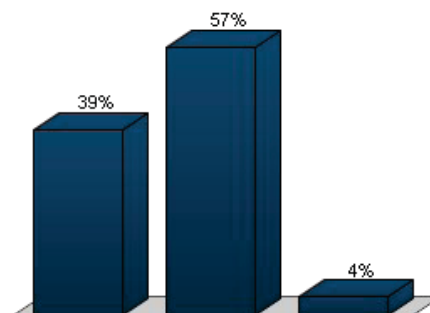
**9.) Eliminate Bay Days/Regatta support (\$130,000) (Multiple Choice)**

Responses		
	Percent	Count
I can live with this cut	73.12%	117
This cut is unacceptable	18.75%	30
Unsure/Undecided	8.12%	13
<b>Totals</b>	<b>100%</b>	<b>160</b>



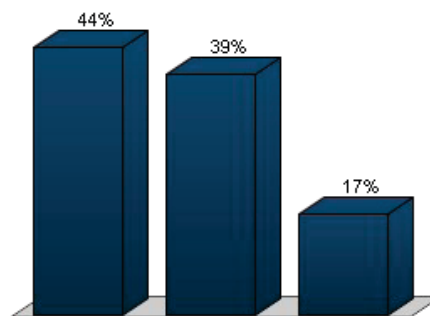
**10.) Decrease Community Services Board contribution to equalize with Newport News per capita amount (\$250,000) (Multiple Choice)**

Responses		
	Percent	Count
I can live with this cut	39.38%	63
This cut is unacceptable	56.88%	91
Unsure/Undecided	3.75%	6
<b>Totals</b>	<b>100%</b>	<b>160</b>



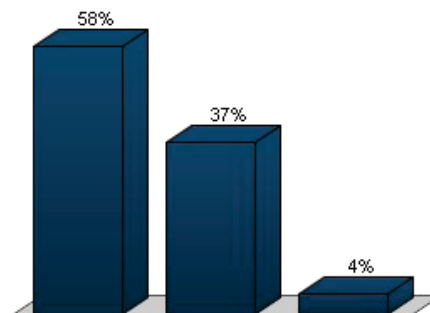
**11.) Increase review time for planning division actions (\$53,200) (Multiple Choice)**

Responses		
	Percent	Count
I can live with this cut	43.95%	69
This cut is unacceptable	39.49%	62
Unsure/Undecided	16.56%	26
<b>Totals</b>	<b>100%</b>	<b>157</b>



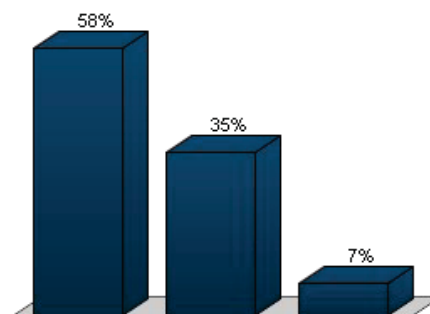
**12.) Close Visitor Center - History Museum (\$86,567) (Multiple Choice)**

Responses		
	Percent	Count
I can live with this cut	58.39%	94
This cut is unacceptable	37.27%	60
Unsure/Undecided	4.35%	7
<b>Totals</b>	<b>100%</b>	<b>161</b>



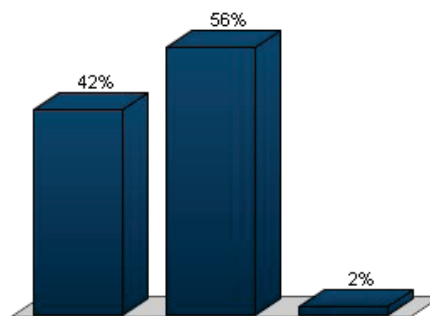
**13.) Increase construction inspection turn around from 2 to 6 days (\$178,978) (Multiple Choice)**

Responses		
	Percent	Count
I can live with this cut	58.02%	94
This cut is unacceptable	35.19%	57
Unsure/Undecided	6.79%	11
<b>Totals</b>	<b>100%</b>	<b>162</b>



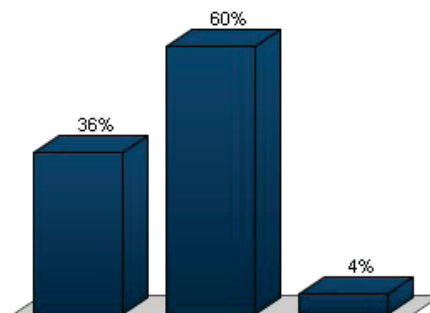
**14.) Reduce street lighting for 200 arterial road lights (\$50,000) (Multiple Choice)**

Responses		
	Percent	Count
I can live with this cut	42.5%	68
This cut is unacceptable	55.62%	89
Unsure/Undecided	1.88%	3
<b>Totals</b>	<b>100%</b>	<b>160</b>



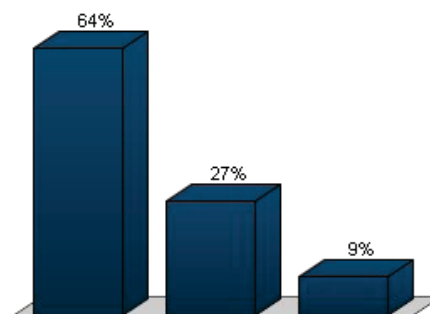
**15.) Reduce mowing from once every 14 days to once per month (\$134,000) (Multiple Choice)**

Responses		
	Percent	Count
I can live with this cut	36.02%	58
This cut is unacceptable	59.63%	96
Unsure/Undecided	4.35%	7
<b>Totals</b>	<b>100%</b>	<b>161</b>



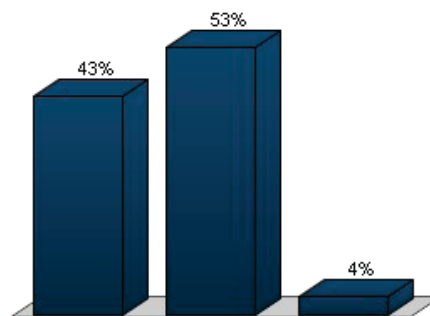
**16.) Close Tennis Center (\$74,701) (Multiple Choice)**

Responses		
	Percent	Count
I can live with this cut	63.58%	103
This cut is unacceptable	27.16%	44
Unsure/Undecided	9.26%	15
<b>Totals</b>	<b>100%</b>	<b>162</b>



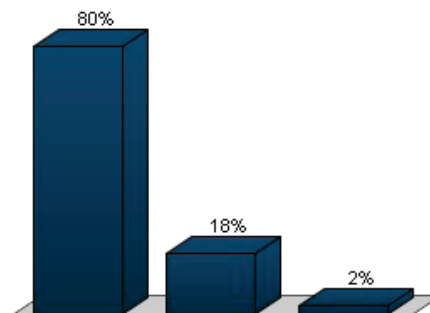
17.) Close Senior Center (\$103,565) (Multiple Choice)

Responses		
	Percent	Count
I can live with this cut	43.21%	70
This cut is unacceptable	53.09%	86
Unsure/Undecided	3.7%	6
<b>Totals</b>	<b>100%</b>	<b>162</b>



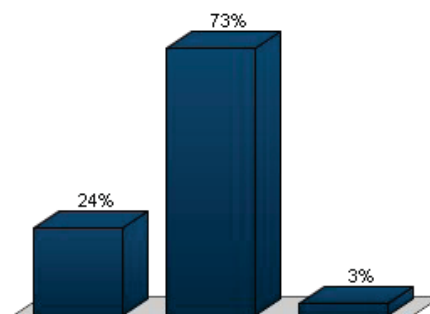
18.) Close Old Hampton Community Center (\$186,206) (Multiple Choice)

Responses		
	Percent	Count
I can live with this cut	79.63%	129
This cut is unacceptable	17.9%	29
Unsure/Undecided	2.47%	4
<b>Totals</b>	<b>100%</b>	<b>162</b>



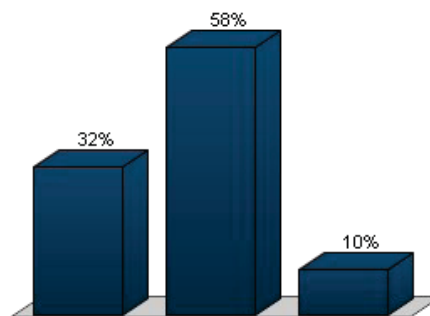
19.) Close Bluebird Gap Farm (\$194,093) (Multiple Choice)

Responses		
	Percent	Count
I can live with this cut	23.93%	39
This cut is unacceptable	73.01%	119
Unsure/Undecided	3.07%	5
<b>Totals</b>	<b>100%</b>	<b>163</b>



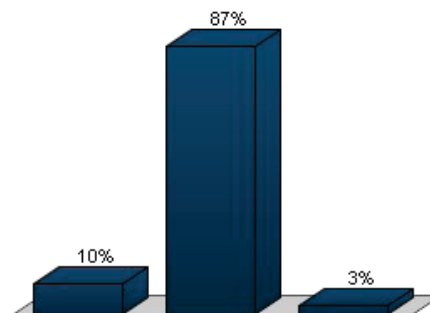
20.) Close History Museum (\$322,849) (Multiple Choice)

Responses		
	Percent	Count
I can live with this cut	32.12%	53
This cut is unacceptable	58.18%	96
Unsure/Undecided	9.7%	16
<b>Totals</b>	<b>100%</b>	<b>165</b>



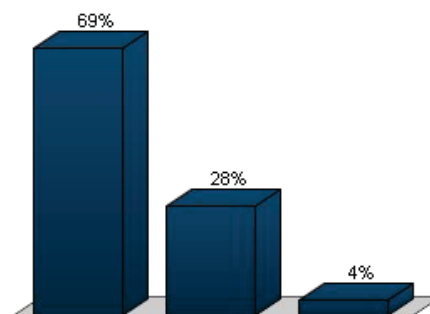
21.) Close all branch libraries (\$477,822) (Multiple Choice)

Responses		
	Percent	Count
I can live with this cut	9.64%	16
This cut is unacceptable	87.35%	145
Unsure/Undecided	3.01%	5
<b>Totals</b>	<b>100%</b>	<b>166</b>



22.) Eliminate weekends, holidays and reduce evening hours for 311 (\$55,000) (Multiple Choice)

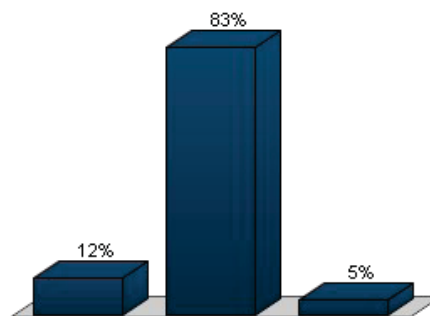
Responses		
	Percent	Count
I can live with this cut	68.52%	111
This cut is unacceptable	27.78%	45
Unsure/Undecided	3.7%	6
<b>Totals</b>	<b>100%</b>	<b>162</b>





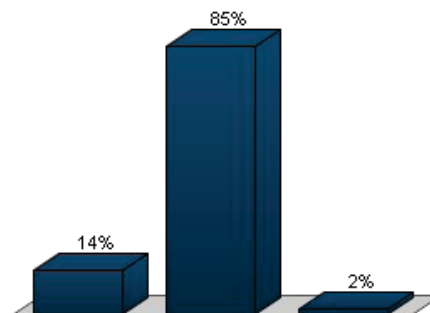
**23.) Eliminate support to volunteer fire companies (\$276,011) (Multiple Choice)**

Responses		
	Percent	Count
I can live with this cut	11.73%	19
This cut is unacceptable	83.33%	135
Unsure/Undecided	4.94%	8
<b>Totals</b>	<b>100%</b>	<b>162</b>



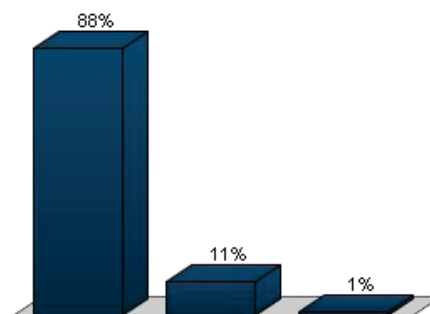
**24.) Eliminate school crossing guards (\$286,350) (Multiple Choice)**

Responses		
	Percent	Count
I can live with this cut	13.58%	22
This cut is unacceptable	84.57%	137
Unsure/Undecided	1.85%	3
<b>Totals</b>	<b>100%</b>	<b>162</b>



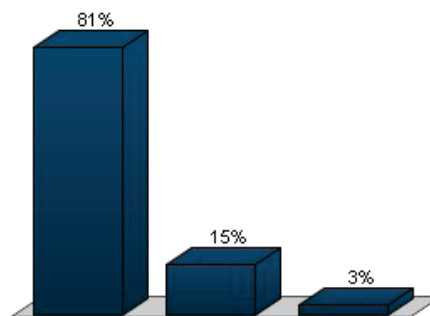
**25.) No longer film and televise the Holly Days parade (\$25,000) (Multiple Choice)**

Responses		
	Percent	Count
I can live with this cut	87.73%	143
This cut is unacceptable	11.04%	18
Unsure/Undecided	1.23%	2
<b>Totals</b>	<b>100%</b>	<b>163</b>



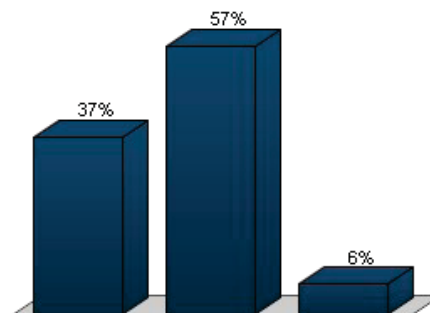
**26.) Decrease specialized newspaper ads (\$50,000) (Multiple Choice)**

Responses		
	Percent	Count
I can live with this cut	81.48%	132
This cut is unacceptable	15.43%	25
Unsure/Undecided	3.09%	5
<b>Totals</b>	<b>100%</b>	<b>162</b>



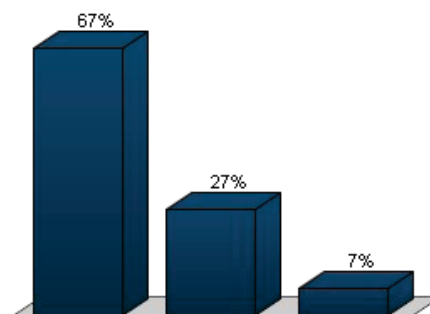
**27.) Decrease internal audit capacity (\$71,492) (Multiple Choice)**

Responses		
	Percent	Count
I can live with this cut	37.27%	60
This cut is unacceptable	56.52%	91
Unsure/Undecided	6.21%	10
<b>Totals</b>	<b>100%</b>	<b>161</b>



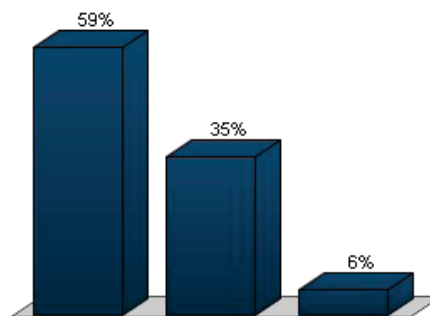
**28.) Eliminate Citizens Unity Commission (\$123,011) (Multiple Choice)**

Responses		
	Percent	Count
I can live with this cut	66.67%	108
This cut is unacceptable	26.54%	43
Unsure/Undecided	6.79%	11
<b>Totals</b>	<b>100%</b>	<b>162</b>



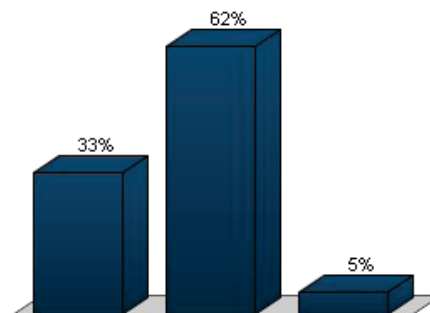
**29.) Eliminate support to Extension Services (4H, Master Gardner, Seafood) (\$66,798) (Multiple Choice)**

Responses		
	Percent	Count
I can live with this cut	59.38%	95
This cut is unacceptable	35%	56
Unsure/Undecided	5.62%	9
<b>Totals</b>	<b>100%</b>	<b>160</b>



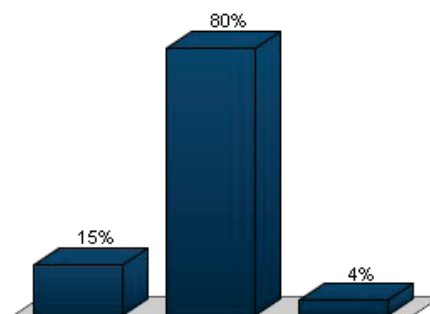
**30.) Eliminate youth civic engagement/youth partnership programs (\$70,000) (Multiple Choice)**

Responses		
	Percent	Count
I can live with this cut	32.72%	53
This cut is unacceptable	62.35%	101
Unsure/Undecided	4.94%	8
<b>Totals</b>	<b>100%</b>	<b>162</b>



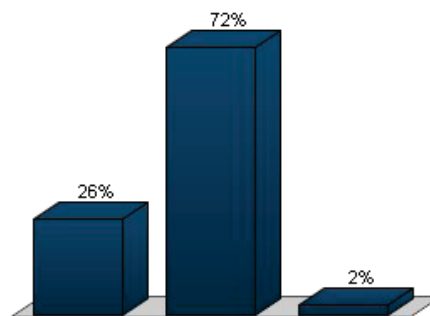
**31.) Close Teen Center (\$150,500) (Multiple Choice)**

Responses		
	Percent	Count
I can live with this cut	15.34%	25
This cut is unacceptable	80.37%	131
Unsure/Undecided	4.29%	7
<b>Totals</b>	<b>100%</b>	<b>163</b>



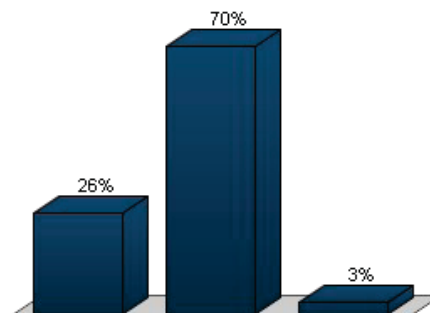
**32.) Eliminate parent education classes (\$238,973) (Multiple Choice)**

Responses		
	Percent	Count
I can live with this cut	25.62%	41
This cut is unacceptable	71.88%	115
Unsure/Undecided	2.5%	4
<b>Totals</b>	<b>100%</b>	<b>160</b>



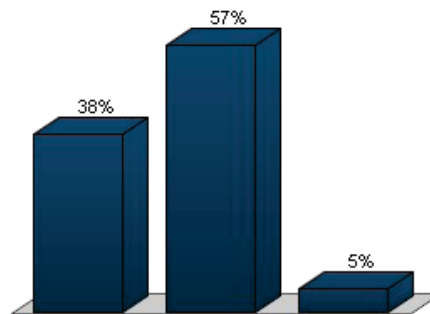
**33.) Eliminate Healthy Start program (\$1,500,000) (Multiple Choice)**

Responses		
	Percent	Count
I can live with this cut	26.42%	42
This cut is unacceptable	70.44%	112
Unsure/Undecided	3.14%	5
<b>Totals</b>	<b>100%</b>	<b>159</b>



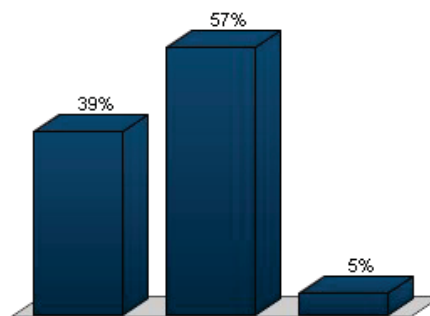
**34.) Eliminate the 8 period A/B block schedule in high school and go to a 7 period daily schedule (\$2,723,314) (Multiple Choice)**

Responses		
	Percent	Count
I can live with this cut	37.82%	59
This cut is unacceptable	57.05%	89
Unsure/Undecided	5.13%	8
<b>Totals</b>	<b>100%</b>	<b>156</b>



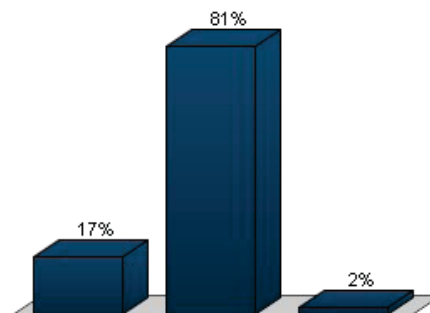
**35.) Eliminate middle school instructional teaming model (\$1,056,456) (Multiple Choice)**

Responses		
	Percent	Count
I can live with this cut	38.71%	60
This cut is unacceptable	56.77%	88
Unsure/Undecided	4.52%	7
<b>Totals</b>	<b>100%</b>	<b>155</b>



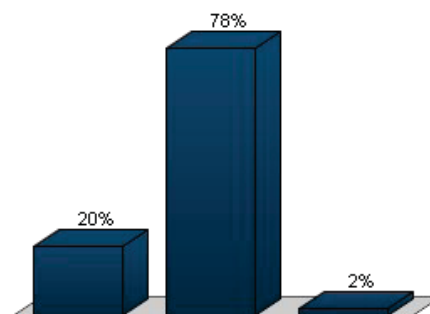
**36.) Increase class size in grades 4 and 5 from 25 students to 30 (\$179,459) (Multiple Choice)**

Responses		
	Percent	Count
I can live with this cut	17.31%	27
This cut is unacceptable	80.77%	126
Unsure/Undecided	1.92%	3
<b>Totals</b>	<b>100%</b>	<b>156</b>



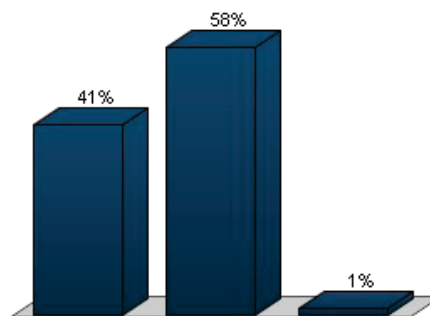
**37.) Cut 26% elementary music and art teachers (\$601,503) (Multiple Choice)**

Responses		
	Percent	Count
I can live with this cut	20%	31
This cut is unacceptable	78.06%	121
Unsure/Undecided	1.94%	3
<b>Totals</b>	<b>100%</b>	<b>155</b>



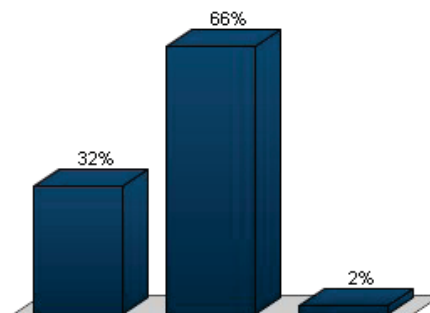
**38.) Share assistant principals in selected elementary schools (\$298,166) (Multiple Choice)**

Responses		
	Percent	Count
I can live with this cut	40.91%	63
This cut is unacceptable	57.79%	89
Unsure/Undecided	1.3%	2
<b>Totals</b>	<b>100%</b>	<b>154</b>



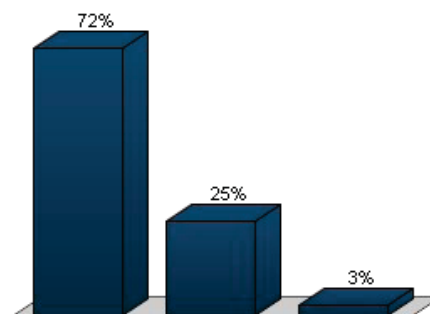
**39.) Cut 42% elementary guidance counselors (\$467,567) (Multiple Choice)**

Responses		
	Percent	Count
I can live with this cut	31.54%	47
This cut is unacceptable	66.44%	99
Unsure/Undecided	2.01%	3
<b>Totals</b>	<b>100%</b>	<b>149</b>



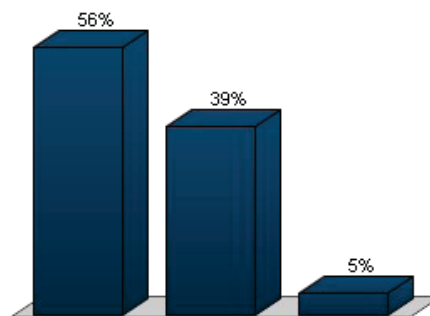
**40.) Close Moton Early Childhood Center (\$280,248) (Multiple Choice)**

Responses		
	Percent	Count
I can live with this cut	71.9%	110
This cut is unacceptable	25.49%	39
Unsure/Undecided	2.61%	4
<b>Totals</b>	<b>100%</b>	<b>153</b>



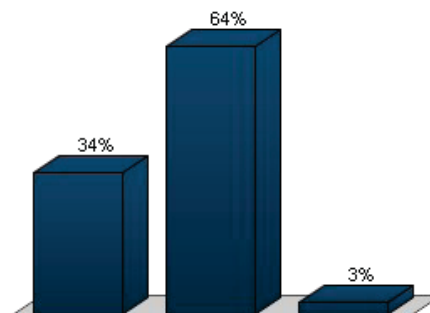
**41.) Eliminate elementary instructional leader supplement (\$146,781) (Multiple Choice)**

Responses		
	Percent	Count
I can live with this cut	56%	84
This cut is unacceptable	39.33%	59
Unsure/Undecided	4.67%	7
<b>Totals</b>	<b>100%</b>	<b>150</b>



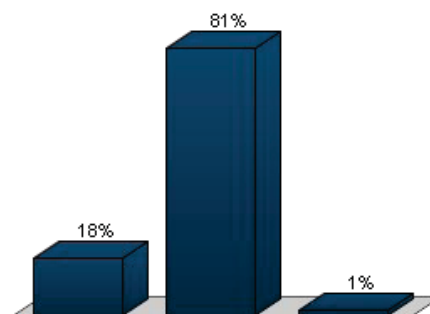
**42.) 25% reduction of all other supplements (\$520,548) (Multiple Choice)**

Responses		
	Percent	Count
I can live with this cut	33.55%	51
This cut is unacceptable	63.82%	97
Unsure/Undecided	2.63%	4
<b>Totals</b>	<b>100%</b>	<b>152</b>



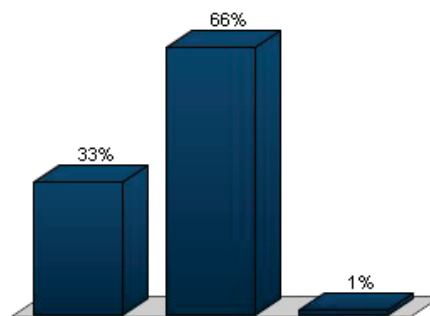
**43.) Reduce kindergarten instructional assistants from full-time to part-time (\$991,724) (Multiple Choice)**

Responses		
	Percent	Count
I can live with this cut	17.53%	27
This cut is unacceptable	81.17%	125
Unsure/Undecided	1.3%	2
<b>Totals</b>	<b>100%</b>	<b>154</b>



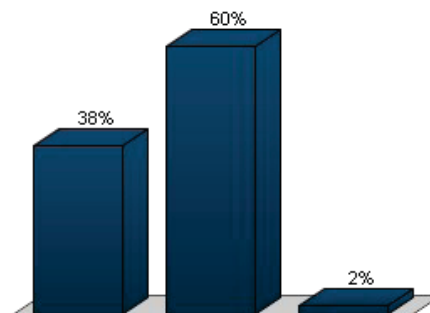
44.) 1.6% pay cut for twelve-month employees (\$424,267) (Multiple Choice)

Responses		
	Percent	Count
I can live with this cut	32.67%	49
This cut is unacceptable	66%	99
Unsure/Undecided	1.33%	2
<b>Totals</b>	<b>100%</b>	<b>150</b>



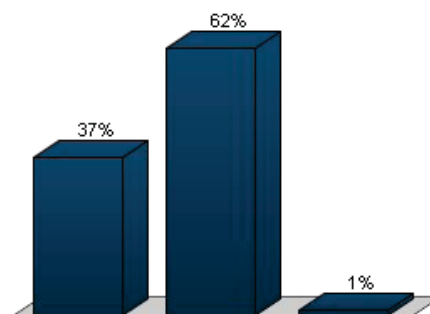
45.) Replace 50% of Registered Nurses with Licensed Practical Nurses (\$238,028) (Multiple Choice)

Responses		
	Percent	Count
I can live with this cut	37.84%	56
This cut is unacceptable	60.14%	89
Unsure/Undecided	2.03%	3
<b>Totals</b>	<b>100%</b>	<b>148</b>



46.) Increase transportation walk zone to 1.5 miles (\$500,000) (Multiple Choice)

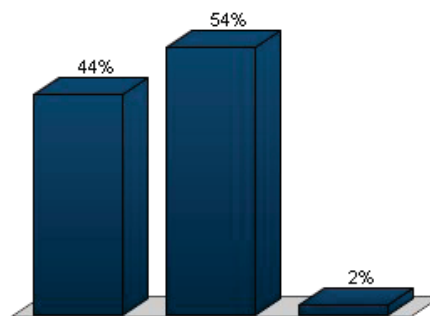
Responses		
	Percent	Count
I can live with this cut	36.67%	55
This cut is unacceptable	62%	93
Unsure/Undecided	1.33%	2
<b>Totals</b>	<b>100%</b>	<b>150</b>





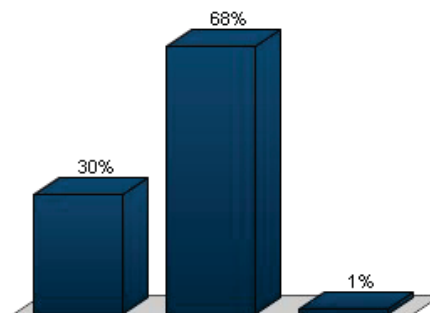
47.) Eliminate cafeteria monitors(\$250,664) (Multiple Choice)

Responses		
	Percent	Count
I can live with this cut	44.22%	65
This cut is unacceptable	53.74%	79
Unsure/Undecided	2.04%	3
<b>Totals</b>	<b>100%</b>	<b>147</b>



48.) Cut funding for field trips by 50%(\$25,000) (Multiple Choice)

Responses		
	Percent	Count
I can live with this cut	30.34%	44
This cut is unacceptable	68.28%	99
Unsure/Undecided	1.38%	2
<b>Totals</b>	<b>100%</b>	<b>145</b>



49.) Please choose the statement that best reflects your opinion. (Multiple Choice)

Responses	
Percent	Count
I am willing to raise the tax rate to protect current services, and I want to invest in capital/technological needs.	63.27% 93
I am willing to raise the tax rate to protect some or all of the current services.	29.25% 43
I want to disinvest in order to maintain the current tax rate.	7.48% 11
<b>Totals</b>	<b>100% 147</b>

