

Session Name: RLS_Merged Sessions_3-11-2013 1-35 PM

Date Created: 3/11/2013 1:35:28 PM

Active Participants: 147 of 147

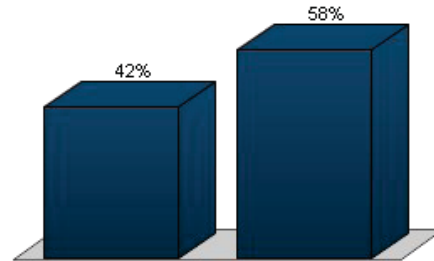
Average Score: 0.00%

Questions: 49

Results By Question

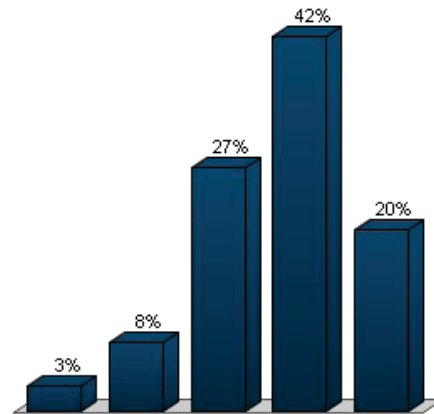
1.) Gender (Demographic Assignment)

Responses		
	Percent	Count
Male	42.07%	61
Female	57.93%	84
Totals	100%	145



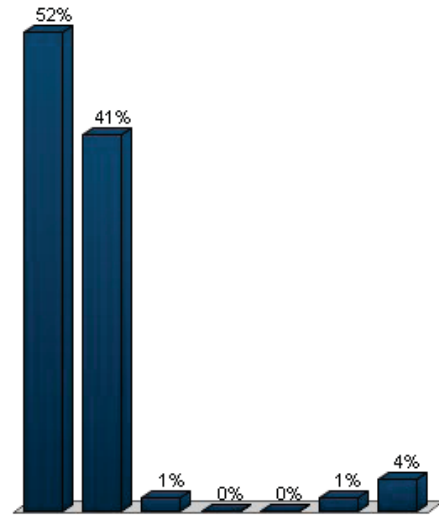
2.) Age (Demographic Assignment)

Responses		
	Percent	Count
19 & Under	2.8%	4
20 – 34	7.69%	11
35 – 49	27.27%	39
50 – 64	41.96%	60
65 & Over	20.28%	29
Totals	100%	143



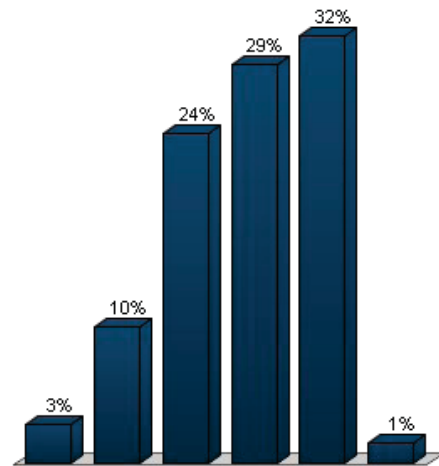
3.) Race (Demographic Assignment)

	Responses	
	Percent	Count
White or European American	52.48%	74
Black or African American	41.13%	58
Hispanic or Latino	1.42%	2
Asian	0%	0
Native Hawaiian/Other Pacific Islander	0%	0
Two or More Races	1.42%	2
Another Race or No Response	3.55%	5
Totals	100%	141



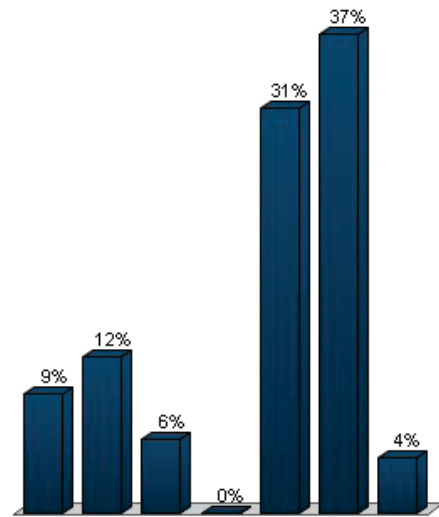
4.) Education Level (Demographic Assignment)

	Responses	
	Percent	Count
Some High School	2.88%	4
High School Degree or GED	10.07%	14
Some College or Associates Degree	24.46%	34
Bachelors Degree	29.5%	41
Masters Degree or Higher	31.65%	44
No Response	1.44%	2
Totals	100%	139



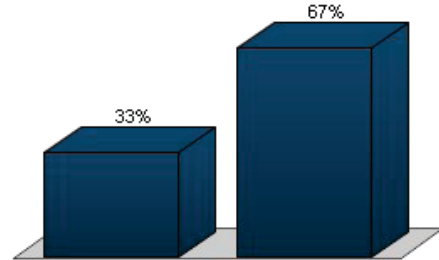
5.) ZipCode(Where you Live, Work, Invest, or Visit most) (Demographic Assignment)

Responses		
	Percent	Count
23661	9.29%	13
23663	12.14%	17
23664	5.71%	8
23665	0%	0
23666	31.43%	44
23669	37.14%	52
Outside of Hampton	4.29%	6
Totals	100%	140



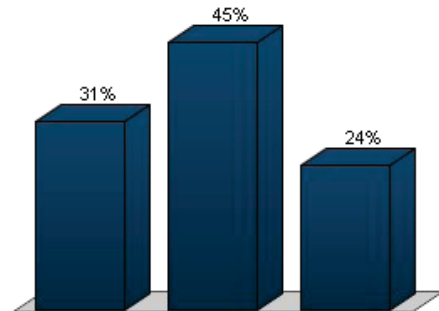
6.) Are There Children In Your Household Who Attend Hampton City Schools? (Demographic Assignment)

Responses		
	Percent	Count
Yes	33.33%	45
No	66.67%	90
Totals	100%	135



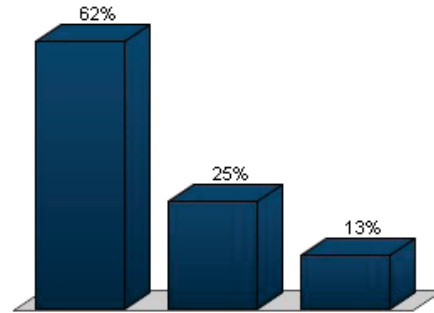
7.) Eliminate certain contributions (\$422,720) (Multiple Choice)

Responses		
	Percent	Count
I can live with this cut	31.39%	43
This cut is unacceptable	44.53%	61
Unsure/Undecided	24.09%	33
Totals	100%	137



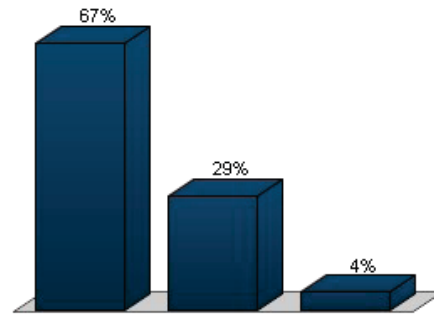
8.) Suspend capital contributions to Christopher Newport University & Hampton University (\$125,000) (Multiple Choice)

Responses		
	Percent	Count
I can live with this cut	62.24%	89
This cut is unacceptable	25.17%	36
Unsure/Undecided	12.59%	18
Totals	100%	143



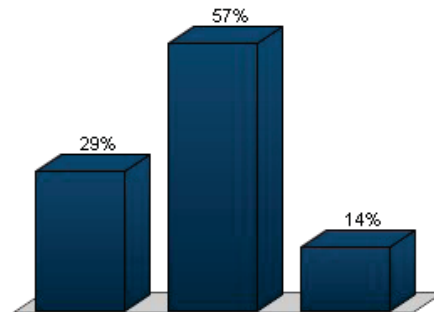
9.) Eliminate Bay Days/Regatta support (\$130,000) (Multiple Choice)

Responses		
	Percent	Count
I can live with this cut	66.91%	91
This cut is unacceptable	28.68%	39
Unsure/Undecided	4.41%	6
Totals	100%	136



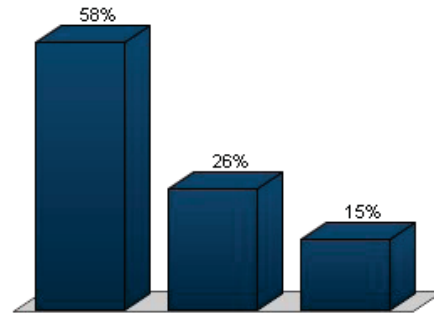
10.) Decrease Community Services Board contribution to equalize with Newport News per capita amount (\$250,000) (Multiple Choice)

Responses		
	Percent	Count
I can live with this cut	29.5%	41
This cut is unacceptable	56.83%	79
Unsure/Undecided	13.67%	19
Totals	100%	139



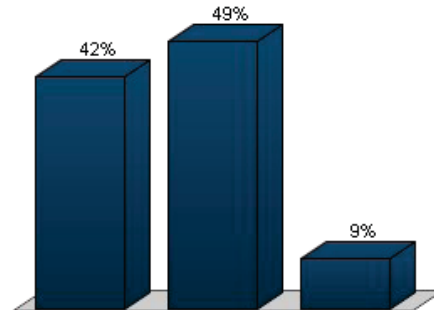
11.) Increase review time for planning division actions (\$53,200) (Multiple Choice)

Responses		
	Percent	Count
I can live with this cut	58.39%	80
This cut is unacceptable	26.28%	36
Unsure/Undecided	15.33%	21
Totals	100%	137



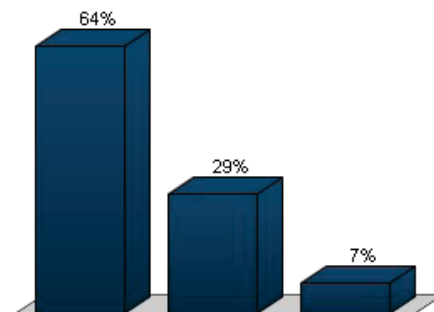
12.) Close Visitor Center - History Museum (\$86,567) (Multiple Choice)

Responses		
	Percent	Count
I can live with this cut	42.14%	59
This cut is unacceptable	48.57%	68
Unsure/Undecided	9.29%	13
Totals	100%	140



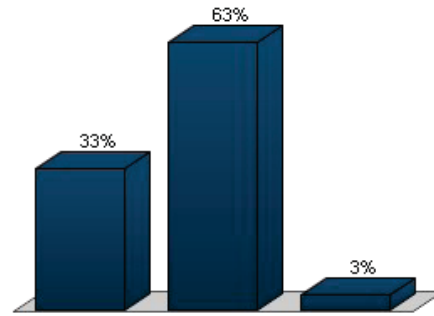
13.) Increase construction inspection turn around from 2 to 6 days (\$178,978) (Multiple Choice)

Responses		
	Percent	Count
I can live with this cut	63.97%	87
This cut is unacceptable	28.68%	39
Unsure/Undecided	7.35%	10
Totals	100%	136



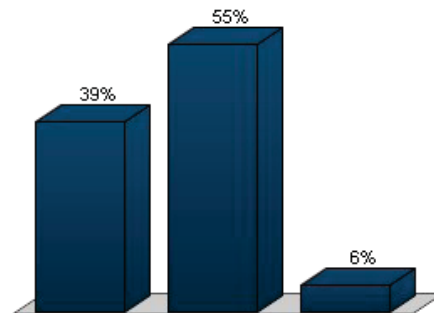
14.) Reduce street lighting for 200 arterial road lights (\$50,000) (Multiple Choice)

Responses		
	Percent	Count
I can live with this cut	33.33%	48
This cut is unacceptable	63.19%	91
Unsure/Undecided	3.47%	5
Totals	100%	144



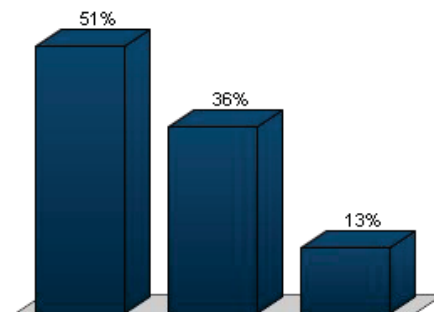
15.) Reduce mowing from once every 14 days to once per month (\$134,000) (Multiple Choice)

Responses		
	Percent	Count
I can live with this cut	39.16%	56
This cut is unacceptable	55.24%	79
Unsure/Undecided	5.59%	8
Totals	100%	143



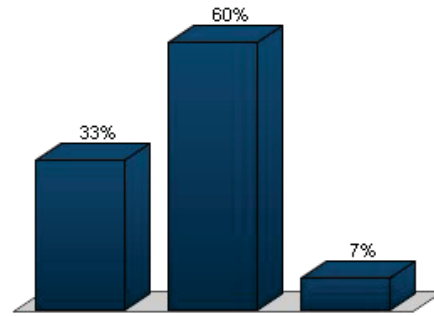
16.) Close Tennis Center (\$74,701) (Multiple Choice)

Responses		
	Percent	Count
I can live with this cut	51.41%	73
This cut is unacceptable	35.92%	51
Unsure/Undecided	12.68%	18
Totals	100%	142



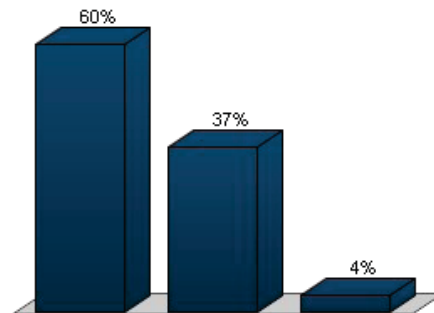
17.) Close Senior Center (\$103,565) (Multiple Choice)

Responses		
	Percent	Count
I can live with this cut	33.33%	47
This cut is unacceptable	59.57%	84
Unsure/Undecided	7.09%	10
Totals	100%	141



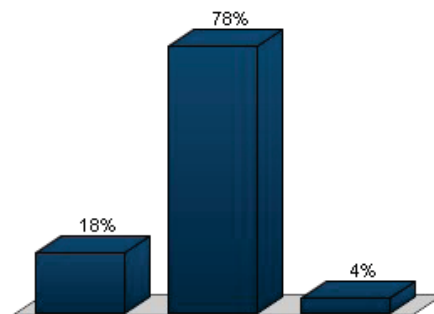
18.) Close Old Hampton Community Center (\$186,206) (Multiple Choice)

Responses		
	Percent	Count
I can live with this cut	59.71%	83
This cut is unacceptable	36.69%	51
Unsure/Undecided	3.6%	5
Totals	100%	139



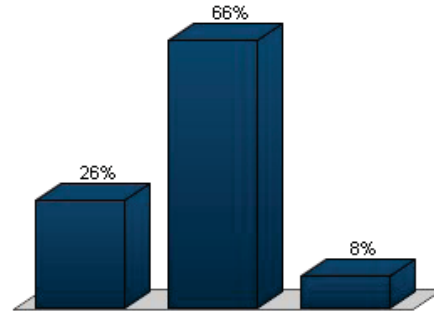
19.) Close Bluebird Gap Farm (\$194,093) (Multiple Choice)

Responses		
	Percent	Count
I can live with this cut	17.61%	25
This cut is unacceptable	78.17%	111
Unsure/Undecided	4.23%	6
Totals	100%	142



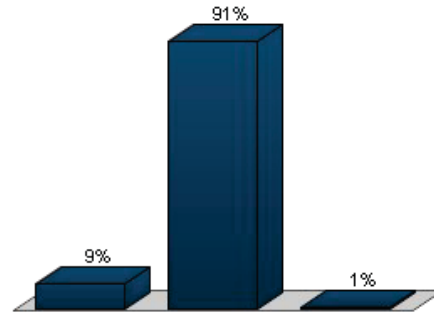
20.) Close History Museum (\$322,849) (Multiple Choice)

Responses		
	Percent	Count
I can live with this cut	26.28%	36
This cut is unacceptable	65.69%	90
Unsure/Undecided	8.03%	11
Totals	100%	137



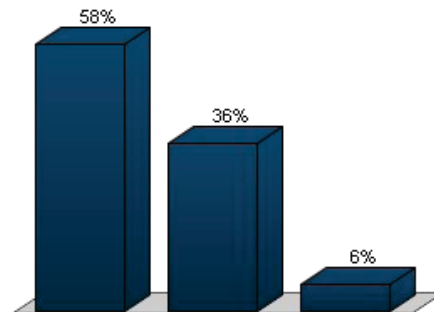
21.) Close all branch libraries (\$477,822) (Multiple Choice)

Responses		
	Percent	Count
I can live with this cut	8.51%	12
This cut is unacceptable	90.78%	128
Unsure/Undecided	0.71%	1
Totals	100%	141



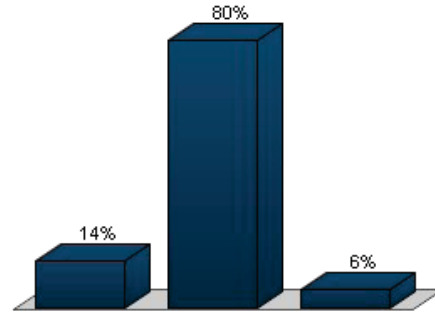
22.) Eliminate weekends, holidays and reduce evening hours for 311 (\$55,000) (Multiple Choice)

Responses		
	Percent	Count
I can live with this cut	57.86%	81
This cut is unacceptable	36.43%	51
Unsure/Undecided	5.71%	8
Totals	100%	140



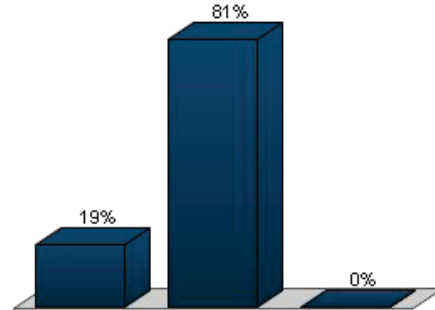
23.) Eliminate support to volunteer fire companies (\$276,011) (Multiple Choice)

Responses		
	Percent	Count
I can live with this cut	14.29%	20
This cut is unacceptable	80%	112
Unsure/Undecided	5.71%	8
Totals	100%	140



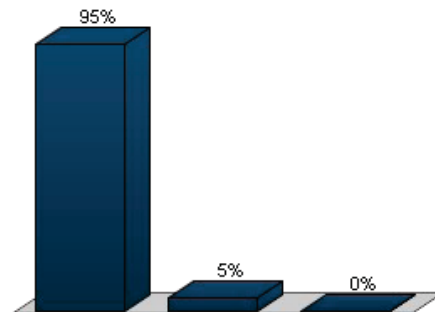
24.) Eliminate school crossing guards (\$286,350) (Multiple Choice)

Responses		
	Percent	Count
I can live with this cut	18.71%	26
This cut is unacceptable	81.29%	113
Unsure/Undecided	0%	0
Totals	100%	139



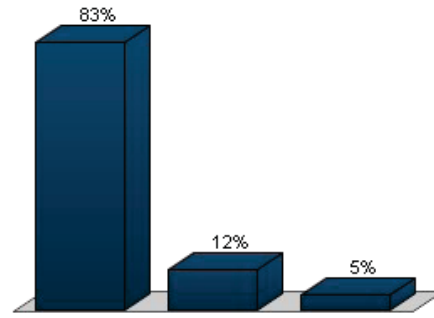
25.) No longer film and televise the Holly Days parade (\$25,000) (Multiple Choice)

Responses		
	Percent	Count
I can live with this cut	94.96%	132
This cut is unacceptable	5.04%	7
Unsure/Undecided	0%	0
Totals	100%	139



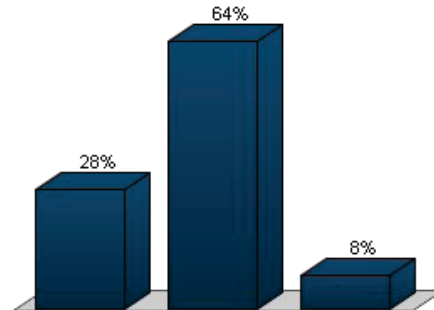
26.) Decrease specialized newspaper ads (\$50,000) (Multiple Choice)

Responses		
	Percent	Count
I can live with this cut	83.08%	108
This cut is unacceptable	12.31%	16
Unsure/Undecided	4.62%	6
Totals	100%	130



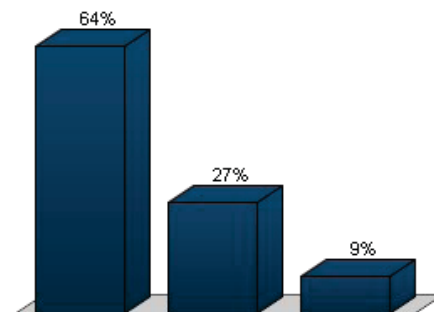
27.) Decrease internal audit capacity (\$71,492) (Multiple Choice)

Responses		
	Percent	Count
I can live with this cut	28.47%	39
This cut is unacceptable	63.5%	87
Unsure/Undecided	8.03%	11
Totals	100%	137



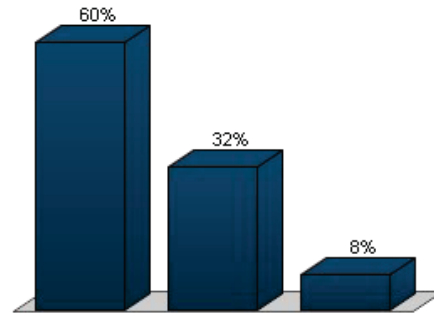
28.) Eliminate Citizens Unity Commission (\$123,011) (Multiple Choice)

Responses		
	Percent	Count
I can live with this cut	64.39%	85
This cut is unacceptable	26.52%	35
Unsure/Undecided	9.09%	12
Totals	100%	132



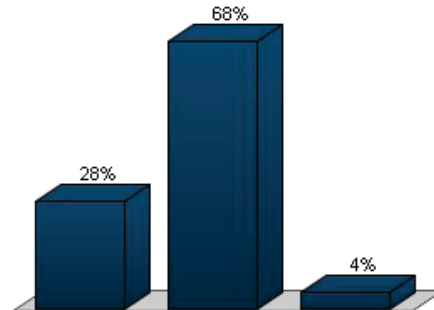
29.) Eliminate support to Extension Services (4H, Master Gardner, Seafood) (\$66,798) (Multiple Choice)

Responses		
	Percent	Count
I can live with this cut	59.85%	82
This cut is unacceptable	32.12%	44
Unsure/Undecided	8.03%	11
Totals	100%	137



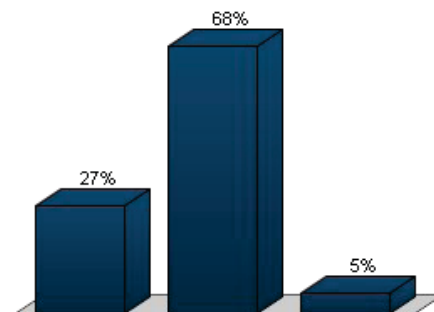
30.) Eliminate youth civic engagement/youth partnership programs (\$70,000) (Multiple Choice)

Responses		
	Percent	Count
I can live with this cut	27.54%	38
This cut is unacceptable	68.12%	94
Unsure/Undecided	4.35%	6
Totals	100%	138



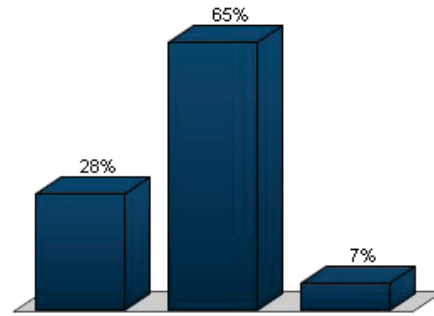
31.) Close Teen Center (\$150,500) (Multiple Choice)

Responses		
	Percent	Count
I can live with this cut	27.14%	38
This cut is unacceptable	67.86%	95
Unsure/Undecided	5%	7
Totals	100%	140



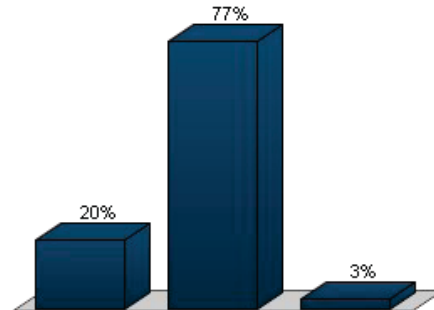
32.) Eliminate parent education classes (\$238,973) (Multiple Choice)

Responses		
	Percent	Count
I can live with this cut	28.26%	39
This cut is unacceptable	65.22%	90
Unsure/Undecided	6.52%	9
Totals	100%	138



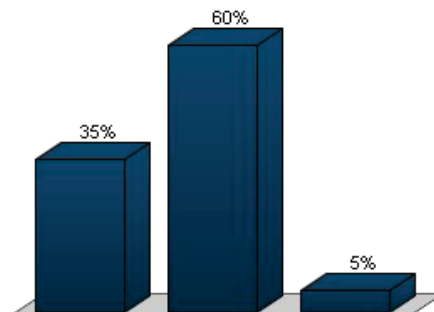
33.) Eliminate Healthy Start program (\$1,500,000) (Multiple Choice)

Responses		
	Percent	Count
I can live with this cut	20%	26
This cut is unacceptable	76.92%	100
Unsure/Undecided	3.08%	4
Totals	100%	130



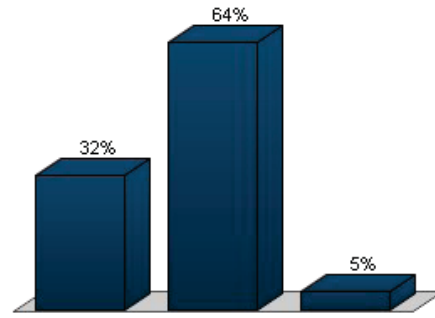
34.) Eliminate the 8 period A/B block schedule in high school and go to a 7 period daily schedule (\$2,723,314) (Multiple Choice)

Responses		
	Percent	Count
I can live with this cut	34.68%	43
This cut is unacceptable	60.48%	75
Unsure/Undecided	4.84%	6
Totals	100%	124



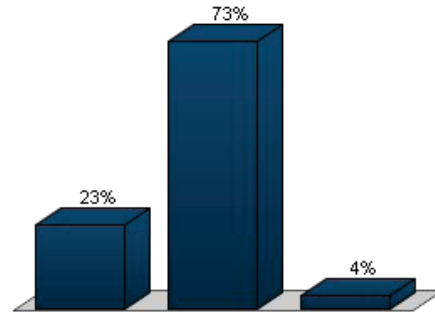
35.) Eliminate middle school instructional teaming model (\$1,056,456) (Multiple Choice)

Responses		
	Percent	Count
I can live with this cut	31.82%	42
This cut is unacceptable	63.64%	84
Unsure/Undecided	4.55%	6
Totals	100%	132



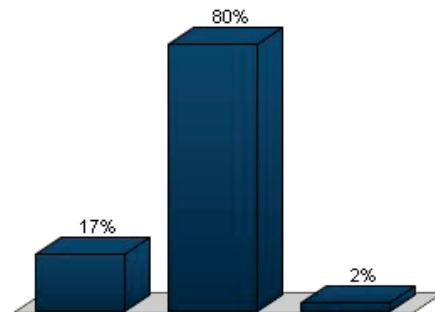
36.) Increase class size in grades 4 and 5 from 25 students to 30 (\$179,459) (Multiple Choice)

Responses		
	Percent	Count
I can live with this cut	23.08%	30
This cut is unacceptable	73.08%	95
Unsure/Undecided	3.85%	5
Totals	100%	130



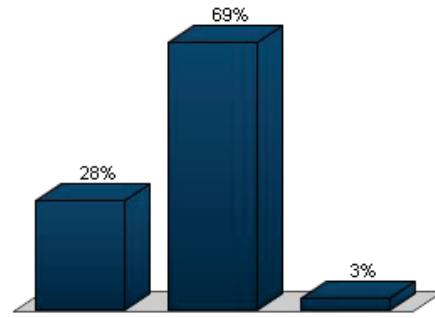
37.) Cut 26% elementary music and art teachers (\$601,503) (Multiple Choice)

Responses		
	Percent	Count
I can live with this cut	17.19%	22
This cut is unacceptable	80.47%	103
Unsure/Undecided	2.34%	3
Totals	100%	128



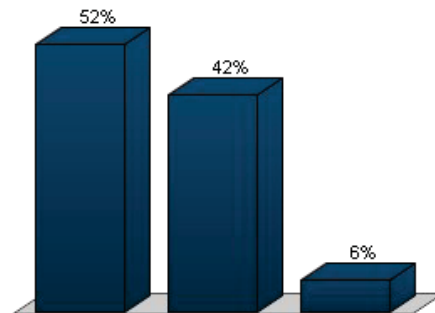
38.) Cut 42% elementary guidance counselors (\$467,567) (Multiple Choice)

Responses		
	Percent	Count
I can live with this cut	28.24%	37
This cut is unacceptable	68.7%	90
Unsure/Undecided	3.05%	4
Totals	100%	131



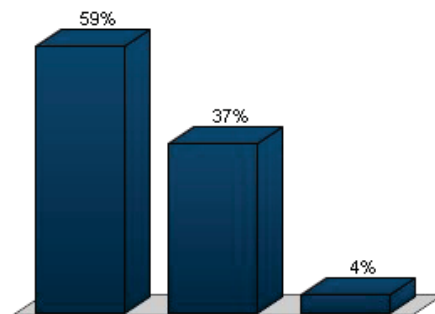
39.) Share assistant principals in selected elementary schools (\$298,166) (Multiple Choice)

Responses		
	Percent	Count
I can live with this cut	51.91%	68
This cut is unacceptable	41.98%	55
Unsure/Undecided	6.11%	8
Totals	100%	131



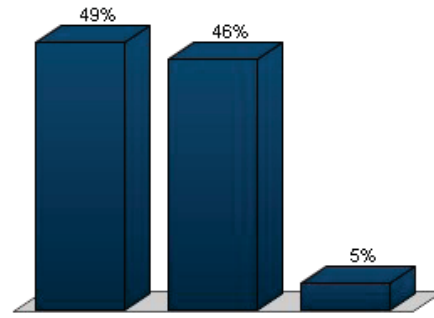
40.) Close Moton Early Childhood Center (\$280,248) (Multiple Choice)

Responses		
	Percent	Count
I can live with this cut	58.68%	71
This cut is unacceptable	37.19%	45
Unsure/Undecided	4.13%	5
Totals	100%	121



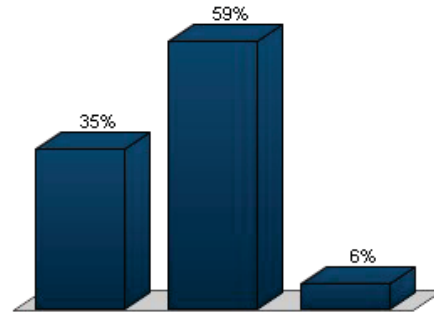
41.) Eliminate elementary instructional leader supplement (\$146,781) (Multiple Choice)

Responses		
	Percent	Count
I can live with this cut	49.18%	60
This cut is unacceptable	45.9%	56
Unsure/Undecided	4.92%	6
Totals	100%	122



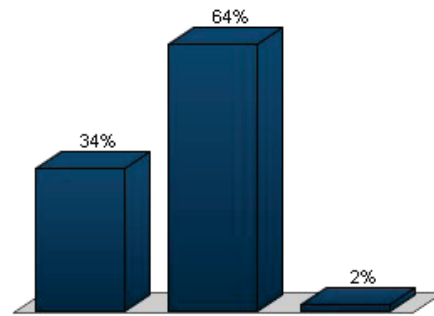
42.) 25% reduction of all other supplements (\$520,548) (Multiple Choice)

Responses		
	Percent	Count
I can live with this cut	35.25%	43
This cut is unacceptable	59.02%	72
Unsure/Undecided	5.74%	7
Totals	100%	122



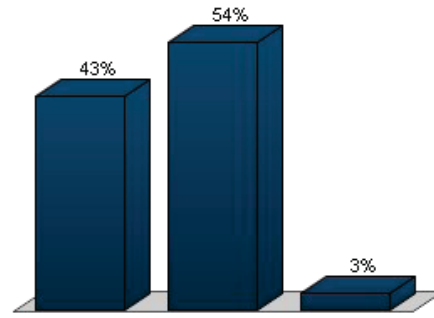
43.) Reduce kindergarten instructional assistants from full-time to part-time (\$991,724) (Multiple Choice)

Responses		
	Percent	Count
I can live with this cut	34.13%	43
This cut is unacceptable	64.29%	81
Unsure/Undecided	1.59%	2
Totals	100%	126



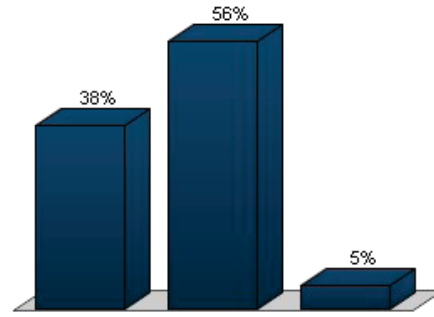
44.) 1.6% pay cut for twelve-month employees (\$424,267) (Multiple Choice)

Responses		
	Percent	Count
I can live with this cut	42.86%	51
This cut is unacceptable	53.78%	64
Unsure/Undecided	3.36%	4
Totals	100%	119



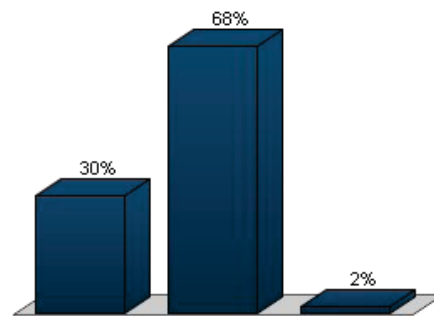
45.) Replace 50% of Registered Nurses with Licensed Practical Nurses (\$238,028) (Multiple Choice)

Responses		
	Percent	Count
I can live with this cut	38.46%	45
This cut is unacceptable	56.41%	66
Unsure/Undecided	5.13%	6
Totals	100%	117



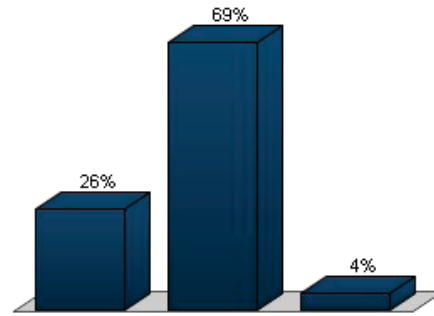
46.) Increase transportation walk zone to 1.5 miles (\$500,000) (Multiple Choice)

Responses		
	Percent	Count
I can live with this cut	29.91%	35
This cut is unacceptable	68.38%	80
Unsure/Undecided	1.71%	2
Totals	100%	117



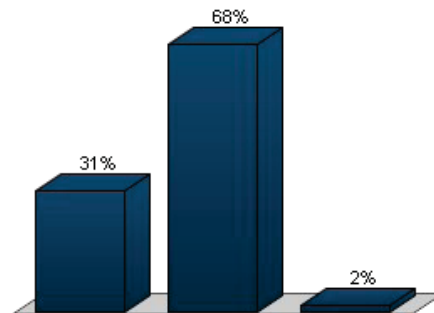
47.) Eliminate cafeteria monitors(\$250,664) (Multiple Choice)

Responses		
	Percent	Count
I can live with this cut	26.32%	30
This cut is unacceptable	69.3%	79
Unsure/Undecided	4.39%	5
Totals	100%	114



48.) Cut funding for field trips by 50%(\$25,000) (Multiple Choice)

Responses		
	Percent	Count
I can live with this cut	30.58%	37
This cut is unacceptable	67.77%	82
Unsure/Undecided	1.65%	2
Totals	100%	121



49.) Please choose the statement that best reflects your opinion. (Multiple Choice)

Responses	
Percent	Count
I am willing to raise the tax rate to protect current services, and I want to invest in capital/technological needs.	54.17% 65
I am willing to raise the tax rate to protect some or all of the current services.	36.67% 44
I want to disinvest in order to maintain the current tax rate.	9.17% 11
Totals	100% 120

